

Review and Analysis for June 2022

(Embargoed until July 22, 2022)

IMPORTANT NOTE: This release includes nonfarm jobs and labor force estimates for June 2022. Data collected for this report references the week including June 12th.



Current Employment Statistics (CES) Program

Payroll Survey Data

CES FAQs: <https://www.bls.gov/sae/questions-and-answers.htm>



Current Employment Statistics (CES)

The Current Employment Statistics (CES) program is a monthly survey of employers conducted by the Bureau of Labor Statistics. The program provides employment, hours, and earnings estimates by industry.

- Employment data refer to persons on establishment payrolls who receive pay for any part of the pay period that includes the 12th of the month
 - Persons are counted at their place of work rather than at their place of residence
 - Persons appearing on more than one payroll are counted on each payroll
- Establishments are classified in an industry based on their principal product or activity using the North American Industry Classification System.

<https://www.bls.gov/sae/overview.htm>

Current Employment Statistics (CES)

Seasonally adjusted estimates:

- In June, Kansas gained 4,600 jobs over-the-month. Over the past 12 months, the number of nonfarm jobs increased by a total of 20,800 jobs.
- The private sector gained 700 jobs over-the-month, or 0.1%. The largest gain was in Education and Health Services (+1,900), while the largest loss was in Professional and Business Services (-1,500). Over the past 12 months, the private sector added 21,800 jobs.

Not seasonally adjusted estimates:

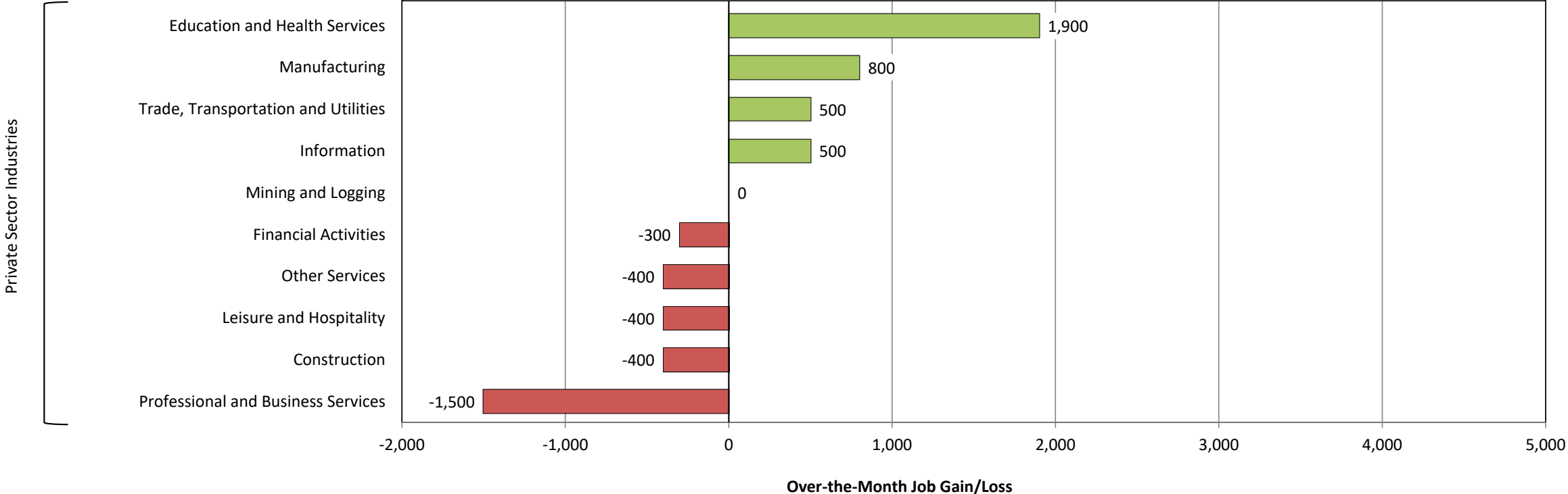
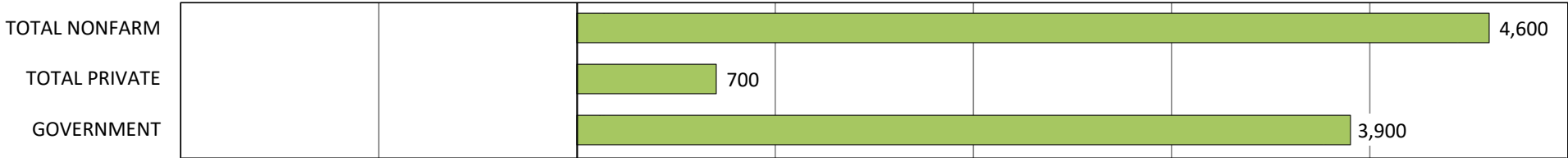
- Average weekly hours worked in the private sector remained unchanged at 34.9.
- Average nominal hourly earnings increased over-the-year by \$1.36 to \$28.29 (+5.1%).
- Average nominal weekly earnings increased by \$58.23 to \$987.32 (+6.3%) over the past 12 months.

Over-the-Month Change in Employment (seasonally adjusted)

Kansas

June 2022

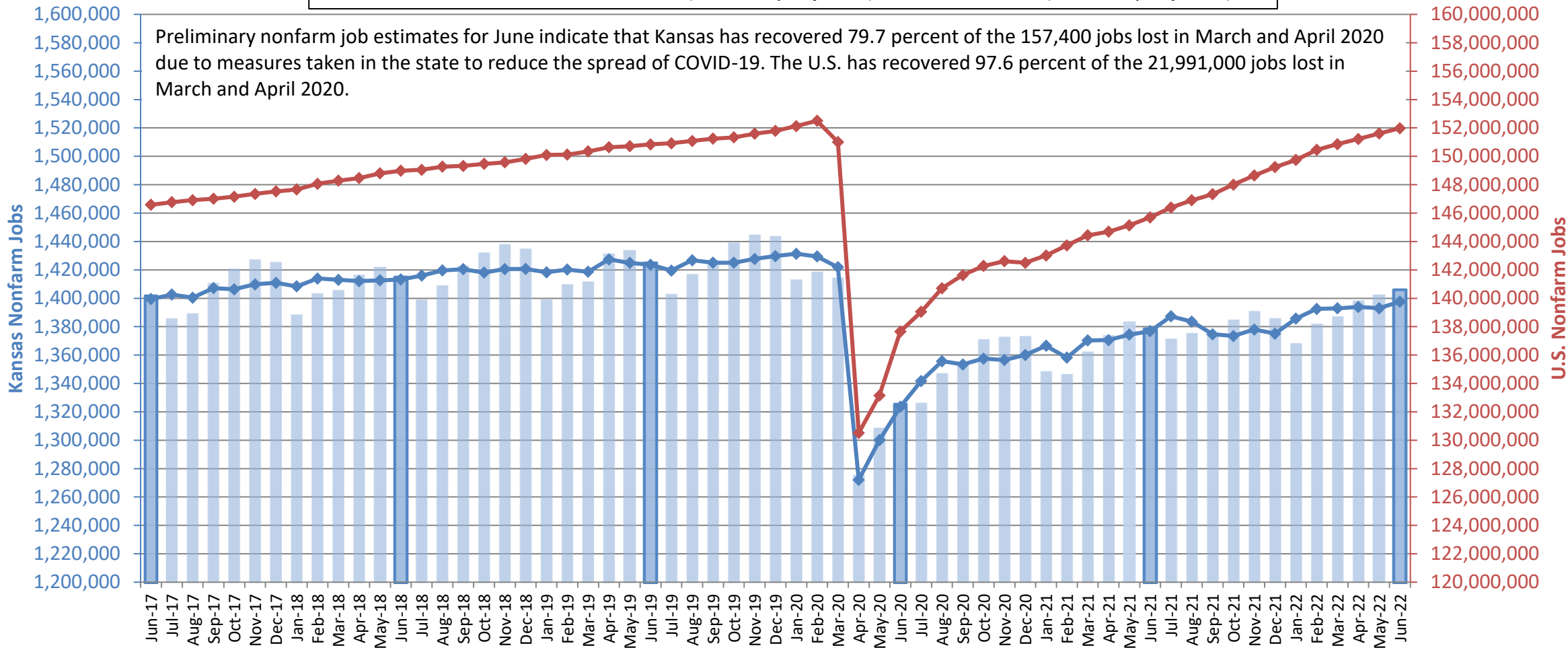
Five of the major sectors saw an increase in jobs over-the-month, while five lost jobs and one remained unchanged.



Source: Kansas Department of Labor, Labor Market Information Services and the Bureau of Labor Statistics; Current Employment Statistics (CES)

Nonfarm Jobs Kansas and U.S. June 2017 to June 2022

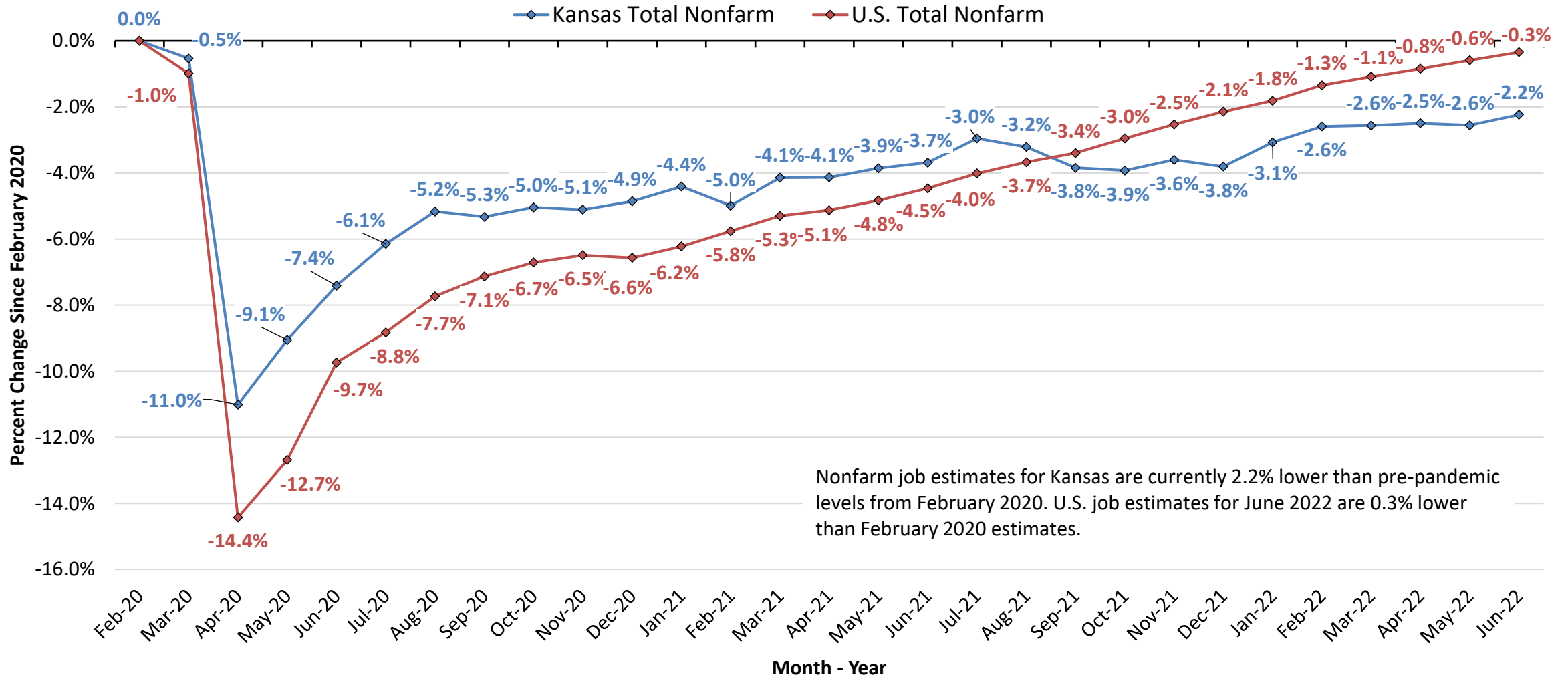
■ Kansas Jobs
 ◆ Kansas Jobs (Seasonally Adjusted)
 ◆ U.S. Jobs (Seasonally Adjusted)



Source: Kansas Department of Labor, Labor Market Information Services and the Bureau of Labor Statistics; Current Employment Statistics (CES)

Over-the-Year Percent Change in Jobs, Not Seasonally Adjusted (KS) +2.0%
 Over-the-Year Percent Change in Jobs, Not Seasonally Adjusted (US) +4.2%

Percent Change in Jobs Since February 2020 Total Nonfarm (seasonally adjusted) February 2020 to June 2022



Nonfarm job estimates for Kansas are currently 2.2% lower than pre-pandemic levels from February 2020. U.S. job estimates for June 2022 are 0.3% lower than February 2020 estimates.

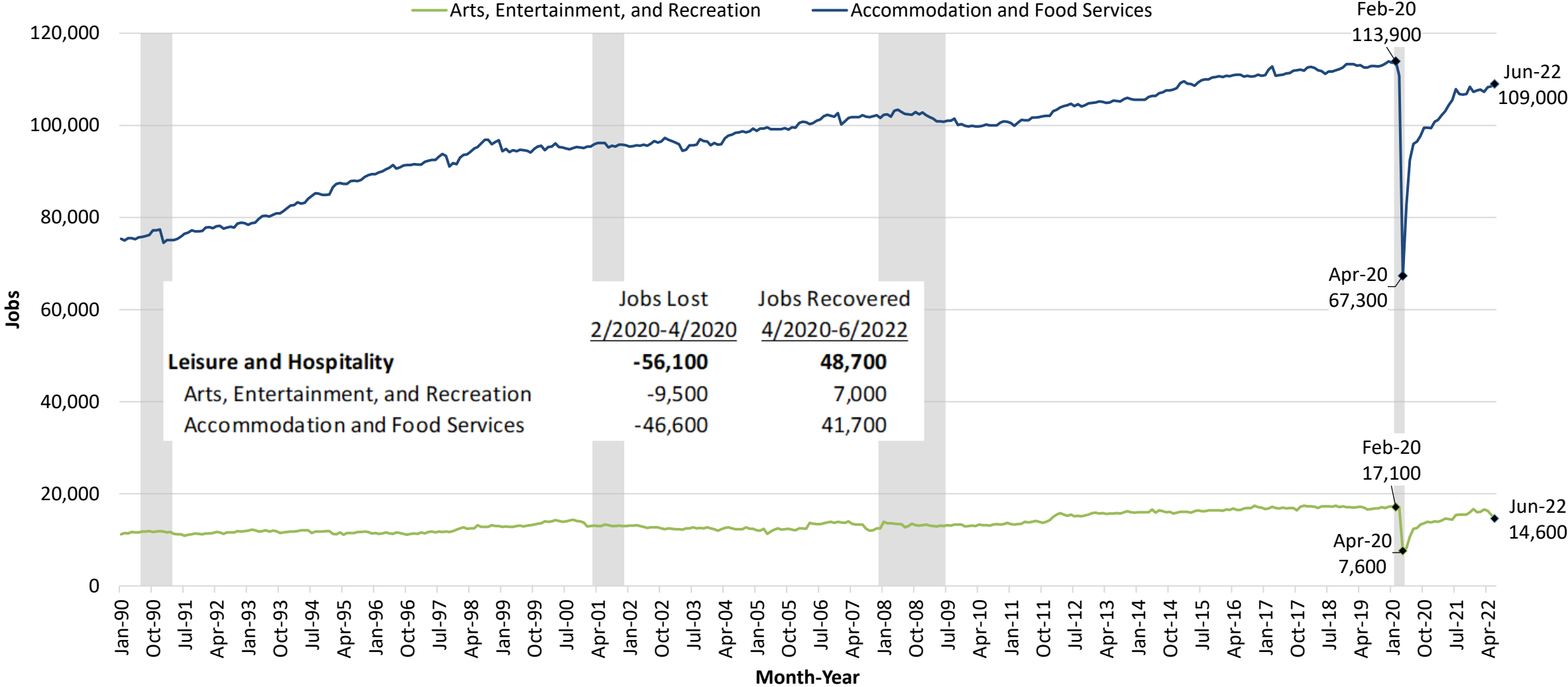
Source: Kansas Department of Labor, Labor Market Information Services and the Bureau of Labor Statistics; Current Employment Statistics (CES)

Seasonally Adjusted Nonfarm Jobs Kansas

	Employment Level			February to April loss		April to May recovery	
	Feb-20	Apr-20	Jun-22	Jobs lost	% lost	Jobs recovered	% recovered
Total Nonfarm	1,429,500	1,272,100	1,397,600	-157,400	-11.0%	125,500	79.7%
Total Private	1,168,800	1,021,300	1,144,300	-147,500	-12.6%	123,000	83.4%
Goods Producing	241,400	219,400	240,800	-22,000	-9.1%	21,400	97.3%
Mining and Logging	6,500	5,800	6,200	-700	-10.8%	400	57.1%
Construction	64,600	61,200	67,400	-3,400	-5.3%	6,200	182.4%
Manufacturing	170,300	152,400	167,200	-17,900	-10.5%	14,800	82.7%
Private Service Providing	927,400	801,900	903,500	-125,500	-13.5%	101,600	81.0%
Trade, Transportation, and Utilities	267,100	243,400	270,300	-23,700	-8.9%	26,900	113.5%
Information	18,200	16,500	18,700	-1,700	-9.3%	2,200	129.4%
Financial Activities	78,200	76,000	72,200	-2,200	-2.8%	-3,800	N/A
Professional and Business Services	175,500	160,600	171,300	-14,900	-8.5%	10,700	71.8%
Education and Health Services	205,600	188,200	198,900	-17,400	-8.5%	10,700	61.5%
Leisure and Hospitality	131,000	74,900	123,600	-56,100	-42.8%	48,700	86.8%
Other Services	51,800	42,300	48,500	-9,500	-18.3%	6,200	65.3%
Government	260,700	250,800	253,300	-9,900	-3.8%	2,500	25.3%
Federal Government	25,700	25,900	25,700	200	0.8%	-200	N/A
State Government	52,200	51,700	49,400	-500	-1.0%	-2,300	N/A
Local Government	182,800	173,200	178,200	-9,600	-5.3%	5,000	52.1%

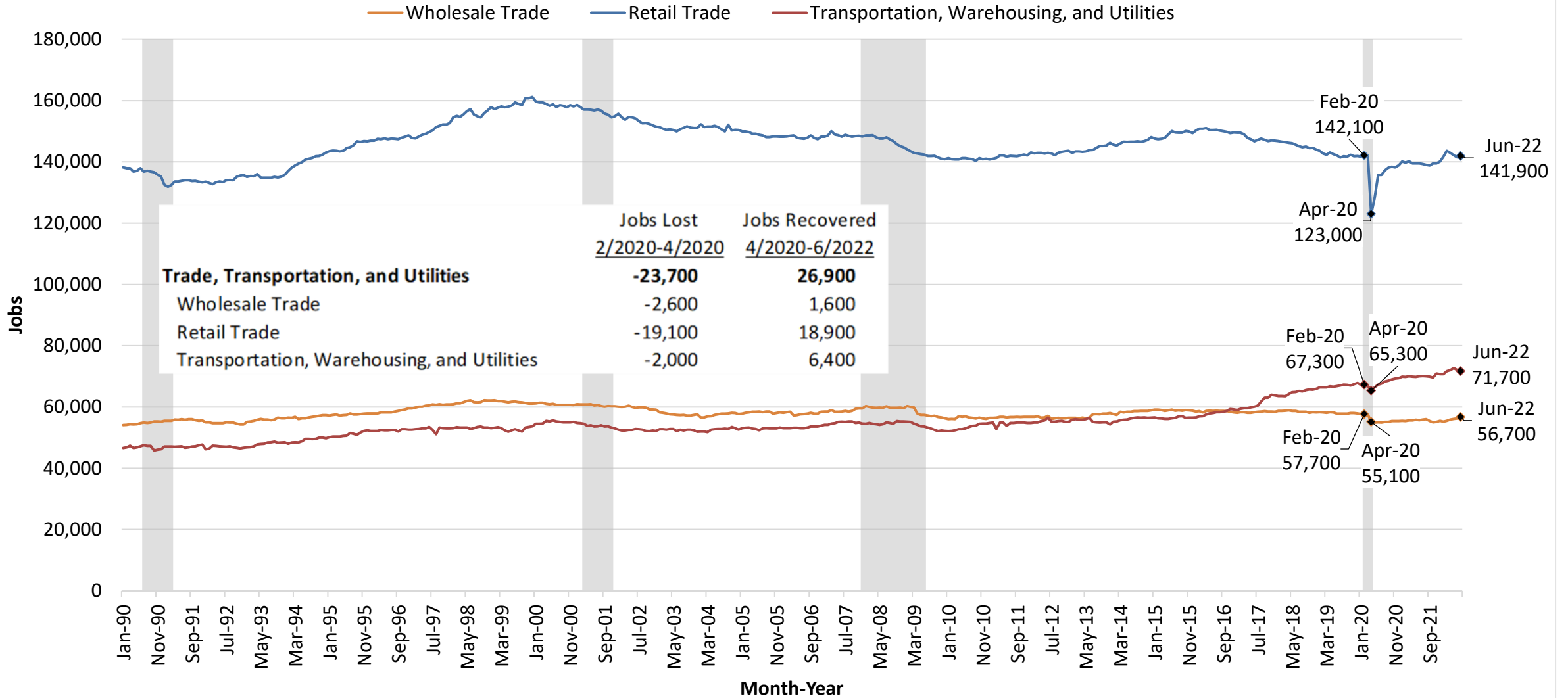
Source: Kansas Department of Labor, Labor Market Information Services and the Bureau of Labor Statistics; Current Employment Statistics (CES)

Leisure and Hospitality Jobs Kansas January 1990 to June 2022



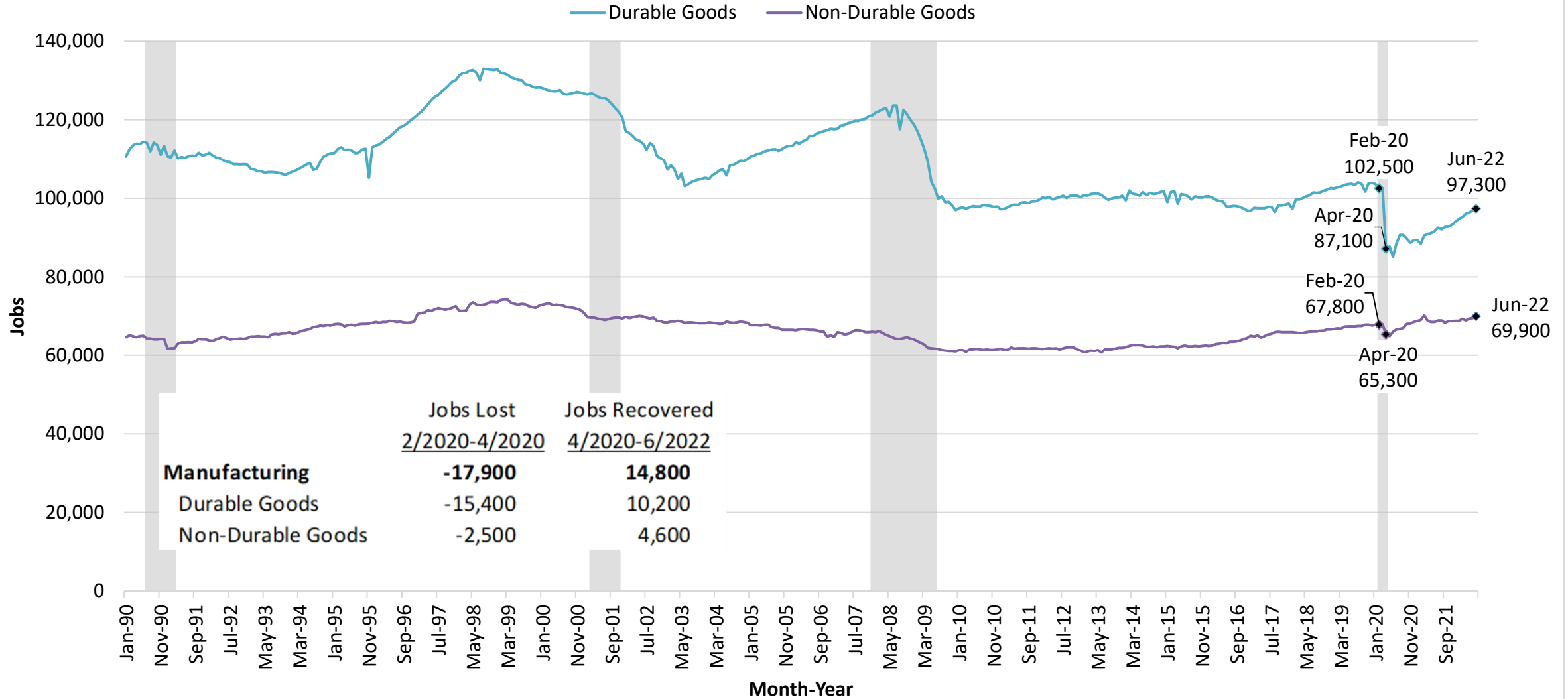
Source: Kansas Department of Labor, Labor Market Information Services and the Bureau of Labor Statistics; Current Employment Statistics (CES)

Trade, Transportation, and Utilities Jobs Kansas January 1990 to June 2022



Source: Kansas Department of Labor, Labor Market Information Services and the Bureau of Labor Statistics; Current Employment Statistics (CES)

Manufacturing Jobs Kansas January 1990 to June 2022

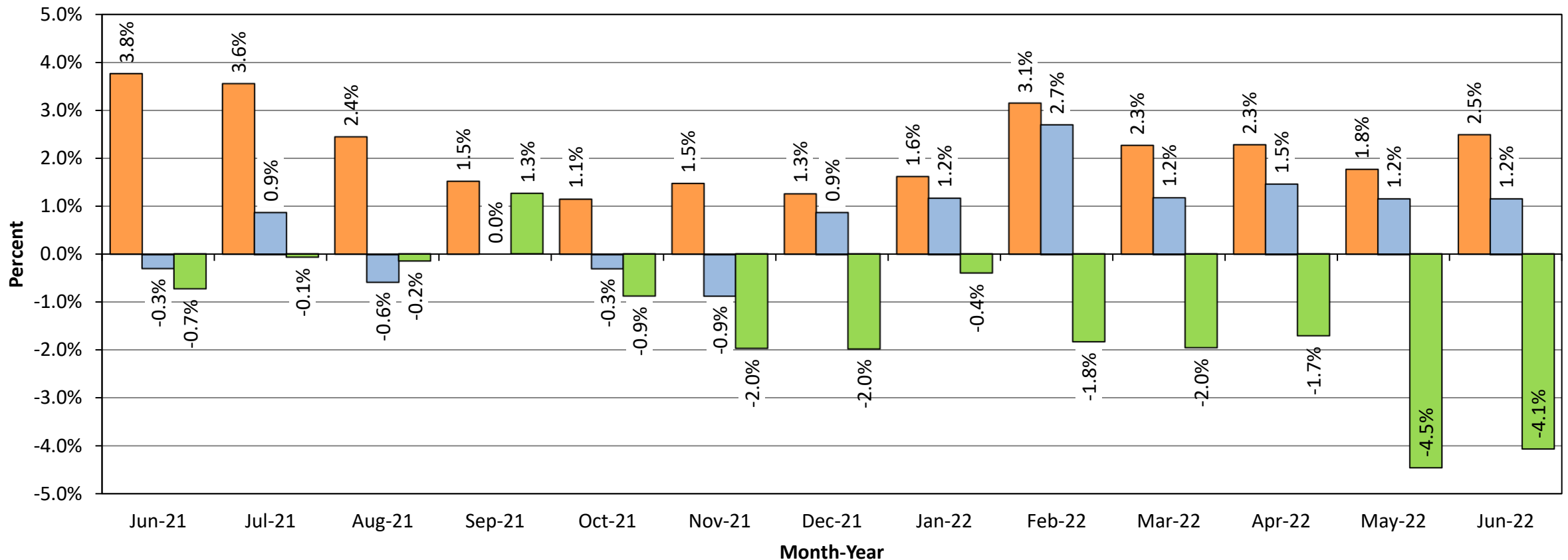


Source: Kansas Department of Labor, Labor Market Information Services and the Bureau of Labor Statistics; Current Employment Statistics (CES)

Over-the-Year Change in Private Sector Jobs, Average Weekly Hours, and Real Hourly Earnings Not Seasonally Adjusted Kansas June 2021 to June 2022

■ Jobs
 ■ Average Weekly Hours
 ■ Real Hourly Earnings

Private sector job estimates show improvement from one year ago. In June, the over-the-year increase in private sector jobs was 2.5 percent, the number of average weekly hours worked increased by 1.2 percent over-the-year, and real hourly earnings decreased by 4.1 percent.



Source: Kansas Department of Labor, Labor Market Information Services and the Bureau of Labor Statistics; Current Employment Statistics (CES)

Local Area Unemployment Statistics (LAUS) Program

Household Survey Data

LAUS FAQs: <https://www.bls.gov/lau/laufaq.htm>



Civilian Noninstitutional Population 16+

Excludes people <16 years, institutionalized, and active duty military

Labor Force

Sum of employed and unemployed

Not in the Labor Force

Examples:

- Retirees not working
- Students not working
- Disabled persons who cannot work
- Persons not working and discouraged from seeking work
- Volunteers working for religious/charitable organizations

Employed

- Worked at all as a paid employee
- Worked 15 hours or more as an unpaid worker in a family business
- Had a job or business from which they were temporarily absent
- Self employed

Unemployed

- Did not meet criteria for employed
- Made specific efforts to find employment during 4 week period ending in the reference week
- Waiting to be recalled to a job they are temporarily laid off from
- Were available for work

Local Area Unemployment Statistics (LAUS)

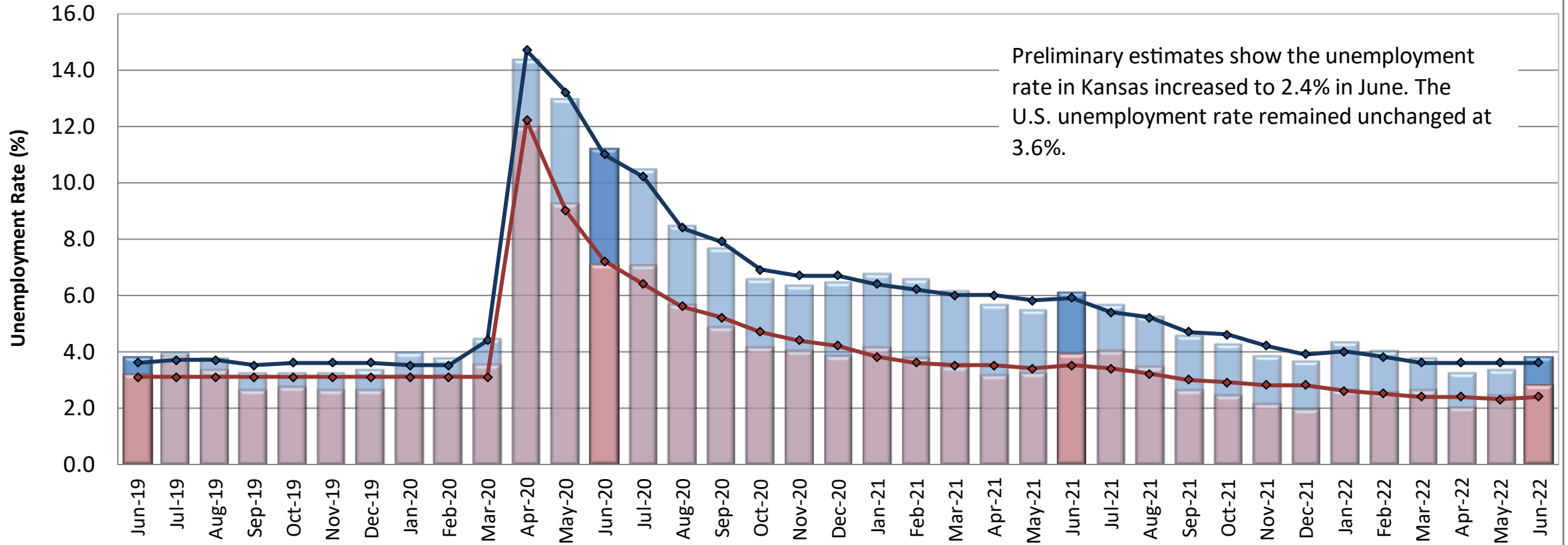
Seasonally adjusted estimates:

- The unemployment rate increased to 2.4% in June. This was a decrease from 3.5% in June 2021. The May 2022 unemployment rate remained at 2.3%.
- The labor force increased by a net of 1,605 individuals to a total of 1,507,043 participants over-the-month.
- Employment increased by a net of 868 individuals to 1,471,007 over-the-month.
- The pool of the unemployed increased by a net of 737 individuals to 36,036 over-the-month.

Not seasonally adjusted estimates:

- The not seasonally adjusted unemployment rate was 2.8% in June.

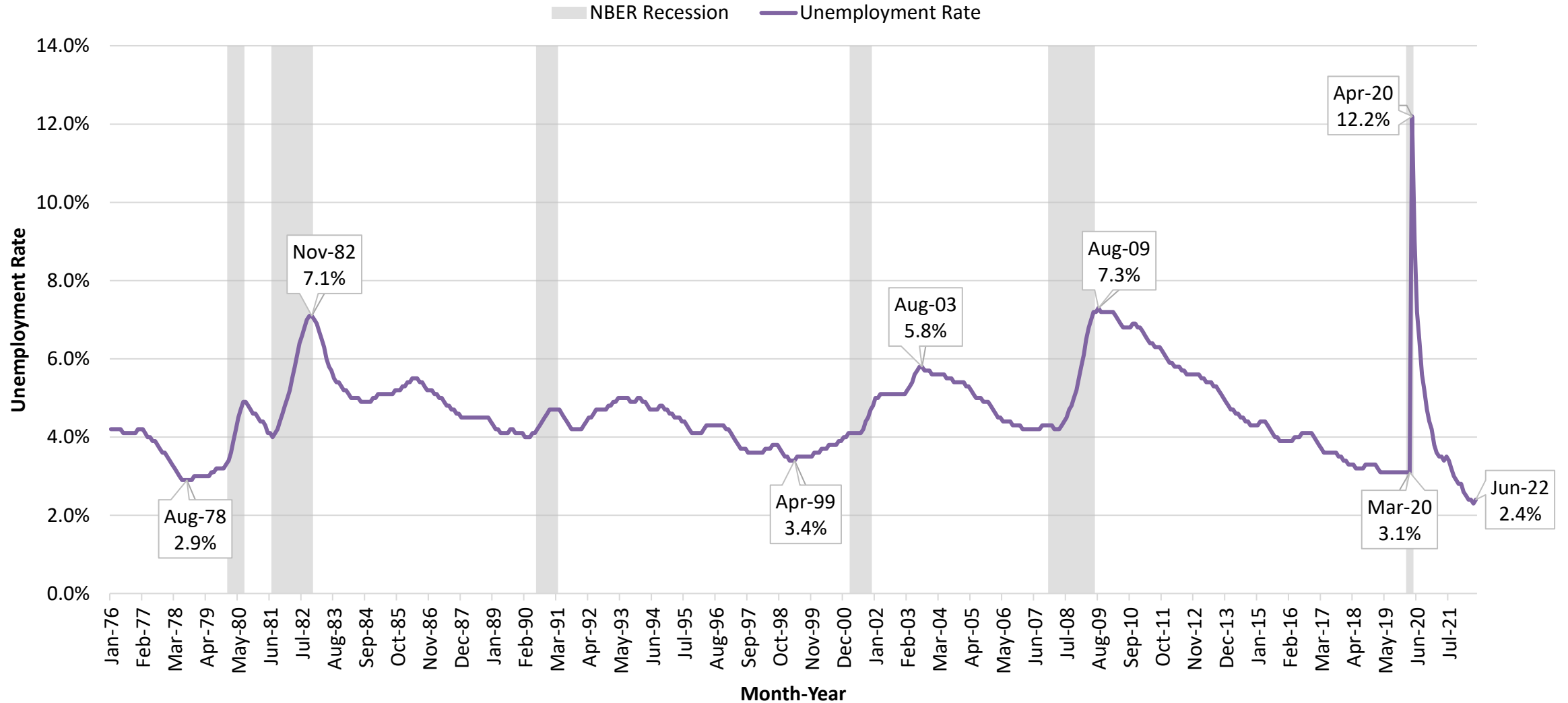
Unemployment Rate Kansas and U.S. June 2019 - June 2022



	Jun-19	Jul-19	Aug-19	Sep-19	Oct-19	Nov-19	Dec-19	Jan-20	Feb-20	Mar-20	Apr-20	May-20	Jun-20	Jul-20	Aug-20	Sep-20	Oct-20	Nov-20	Dec-20	Jan-21	Feb-21	Mar-21	Apr-21	May-21	Jun-21	Jul-21	Aug-21	Sep-21	Oct-21	Nov-21	Dec-21	Jan-22	Feb-22	Mar-22	Apr-22	May-22	Jun-22
U.S.	3.8	4.0	3.8	3.3	3.3	3.3	3.4	4.0	3.8	4.5	14.4	13.0	11.2	10.5	8.5	7.7	6.6	6.4	6.5	6.8	6.6	6.2	5.7	5.5	6.1	5.7	5.3	4.6	4.3	3.9	3.7	4.4	4.1	3.8	3.3	3.4	3.8
Kansas	3.2	3.9	3.4	2.7	2.8	2.7	2.7	3.2	3.2	3.6	12.0	9.3	7.1	7.1	5.7	4.9	4.2	4.1	3.9	4.2	3.8	3.5	3.2	3.3	3.9	4.1	3.5	2.7	2.5	2.2	2.0	2.7	2.6	2.7	2.1	2.5	2.8
U.S. SA	3.6	3.7	3.7	3.5	3.6	3.6	3.6	3.5	3.5	4.4	14.7	13.2	11.0	10.2	8.4	7.9	6.9	6.7	6.7	6.4	6.2	6.0	6.0	5.8	5.9	5.4	5.2	4.7	4.6	4.2	3.9	4.0	3.8	3.6	3.6	3.6	3.6
Kansas SA	3.1	3.1	3.1	3.1	3.1	3.1	3.1	3.1	3.1	3.1	12.2	9.0	7.2	6.4	5.6	5.2	4.7	4.4	4.2	3.8	3.6	3.5	3.5	3.4	3.5	3.4	3.2	3.0	2.9	2.8	2.8	2.6	2.5	2.4	2.4	2.3	2.4

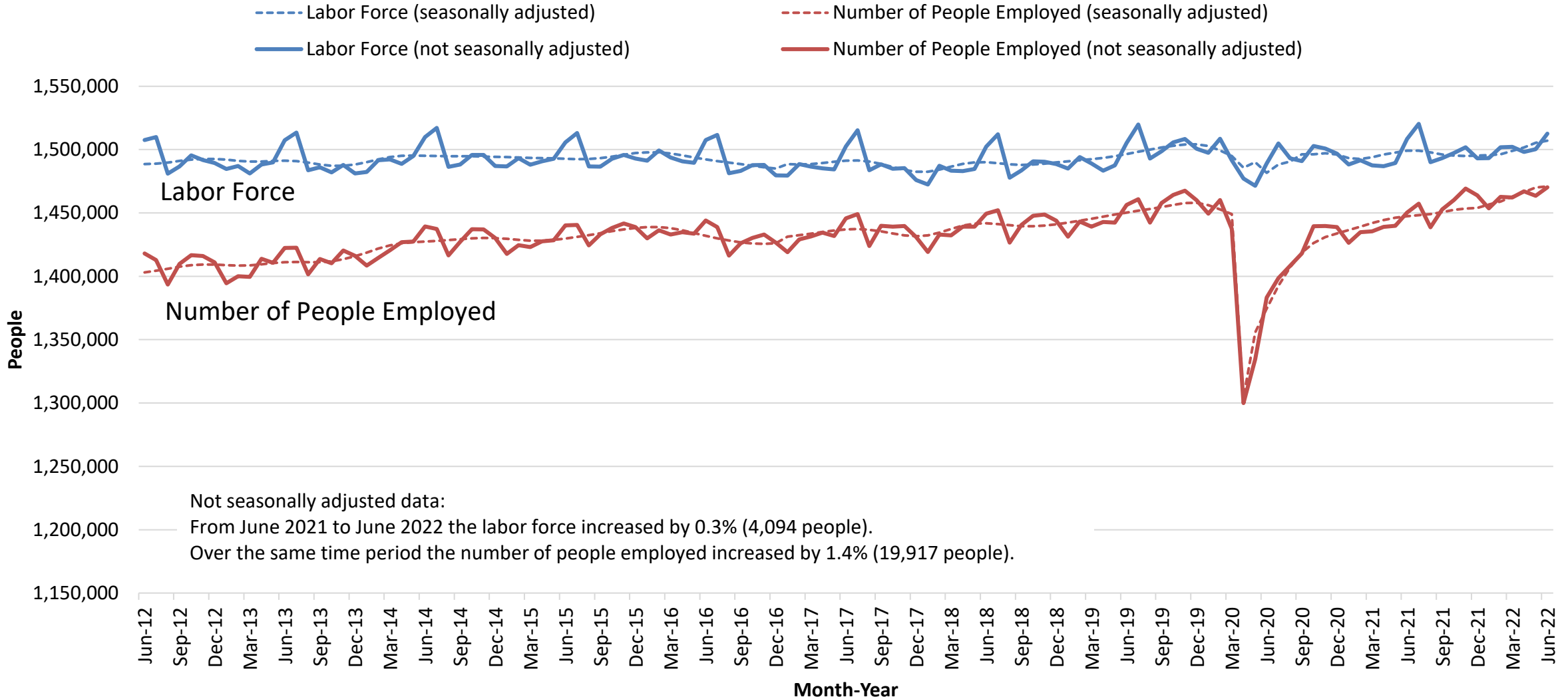
Source: Kansas Department of Labor, Labor Market Information Services and the Bureau of Labor Statistics; Local Area Unemployment Statistics (LAUS)

Unemployment Rate Kansas January 1976 to June 2022



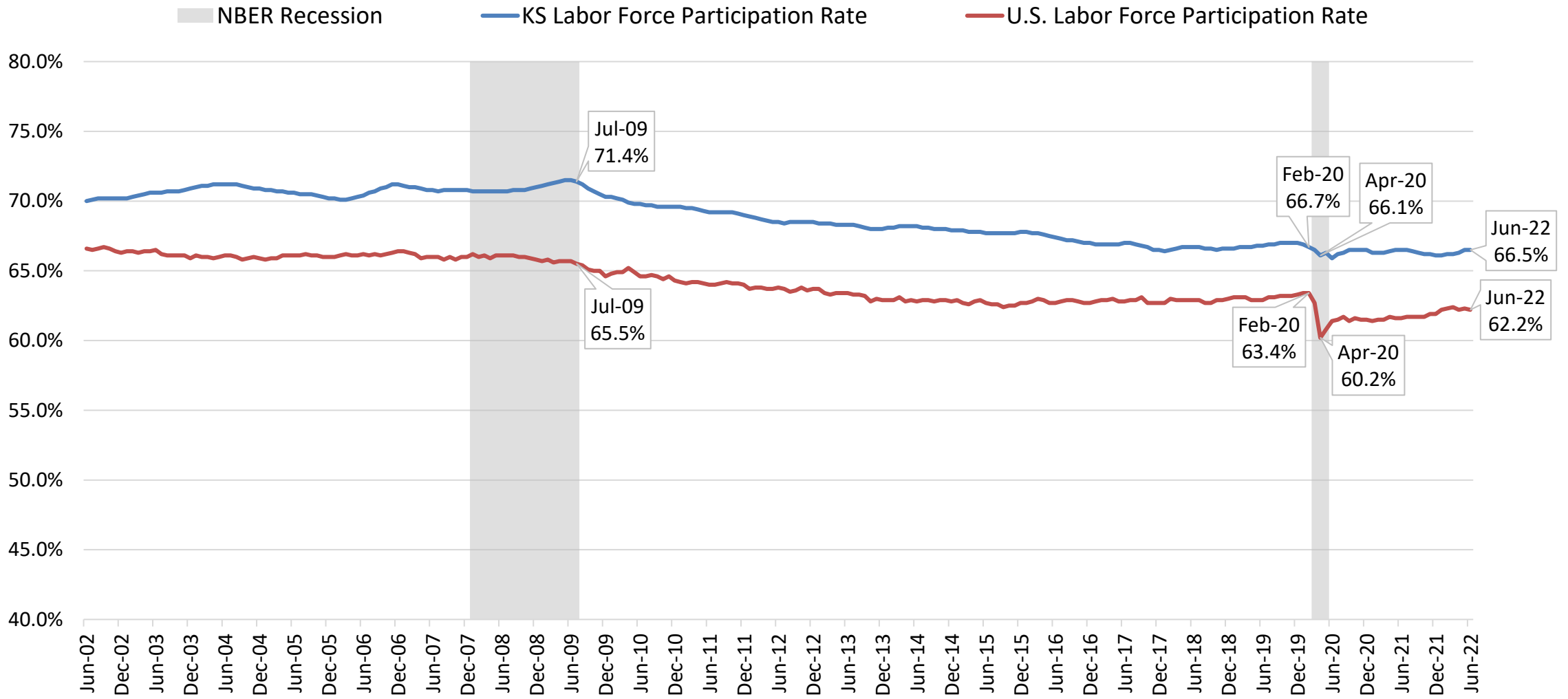
Source: Kansas Department of Labor, Labor Market Information Services and the Bureau of Labor Statistics; Local Area Unemployment Statistics (LAUS)

Labor Force and Employment Kansas June 2012 to June 2022



Source: Kansas Department of Labor, Labor Market Information Services and the Bureau of Labor Statistics; Local Area Unemployment Statistics (LAUS)

Labor Force Participation Rate Kansas and U.S. June 2002 to June 2022



Source: Kansas Department of Labor, Labor Market Information Services and the Bureau of Labor Statistics; Local Area Unemployment Statistics (LAUS)