

Review and Analysis for April 2020

(Embargoed until May 22, 2020)

Summary:

- Kansas lost 130,400 total nonfarm jobs in April 2020. This change was due to a loss of 121,600 private sector jobs and a loss of 8,800 government jobs.
- The unemployment rate increased to 11.2 percent in April.
- In April 2020 there were 123,865 initial claims filed and 412,957 continued claims filed for unemployment insurance.



For more information, contact:
Julie Menghini
Director of Communications
401 S.W. Topeka Blvd
Topeka, KS 66603
Phone: 785-581-7307
Fax: 785-296-0753

INDUSTRY DATA

Current Employment Statistics (CES)

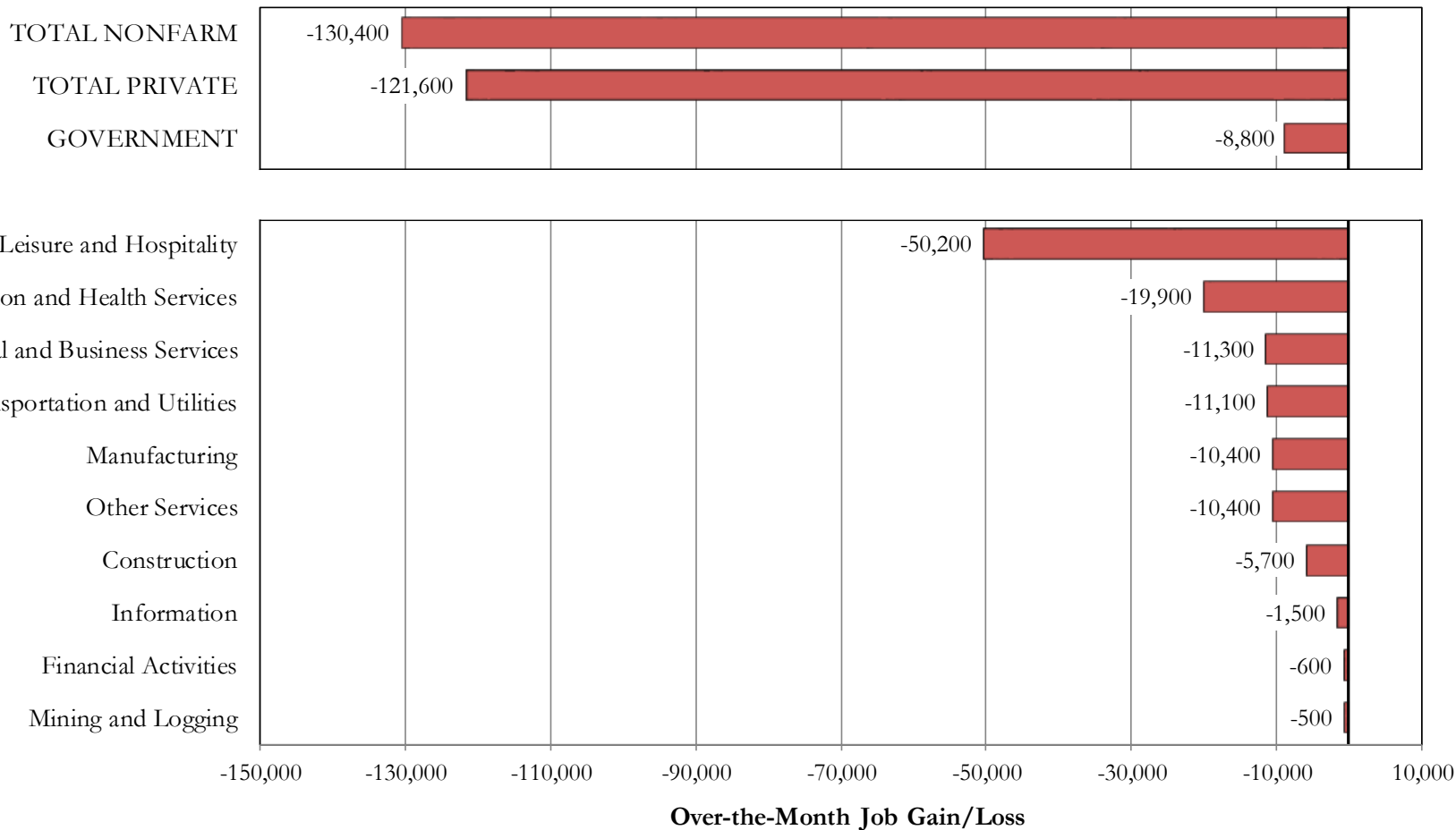
- Seasonally adjusted preliminary total nonfarm jobs estimates for March were revised downward by 5,500 jobs, from 1,428,400 to 1,422,900. Seasonally adjusted private sector jobs were revised downward by 5,900 jobs, from 1,168,000 to 1,162,100.
- Kansas lost 130,400 jobs over the month. Over the past 12 months, the number of nonfarm jobs decreased by a total of 133,200 jobs. Estimates are seasonally adjusted.
- The private sector lost 121,600 jobs over the month, or -10.5%. The largest losses were in Leisure and Hospitality (-50,200) and Education and Health Services (-19,900). Over the past 12 months, the private sector lost 125,500 jobs. Estimates are seasonally adjusted.
- Average weekly hours worked in the private sector decreased to 34.1 hours, a decrease of 0.4 hours from last April. Average nominal hourly earnings increased by \$1.18 to \$26.39 (+4.7%). Average nominal weekly earnings increased by \$30.15 to \$899.90 (+3.5%) over the past 12 months. Estimates are not seasonally adjusted.

Over-the-Month Change in Employment (seasonally adjusted)

Kansas

April 2020

All 11 major sectors lost jobs over the month.



Source: Kansas Department of Labor, Labor Market Information Services and the Bureau of Labor Statistics; Current Employment Statistics (CES)

April 2020 Not Seasonally Adjusted Nonfarm Jobs

Place of Work Data

	April 2020	Month Change		12 Month Change	
		Absolute	Percent	Absolute	Percent
TOTAL NONFARM	1,296,600	-119,400	-8.4%	-134,700	-9.4%
GOVERNMENT	258,300	-8,600	-3.2%	-8,400	-3.1%
TOTAL PRIVATE	1,038,300	-110,800	-9.6%	-126,300	-10.8%
<i>GOODS-PRODUCING</i>	<i>224,900</i>	<i>-13,600</i>	<i>-5.7%</i>	<i>-14,800</i>	<i>-6.2%</i>
Mining and Logging	6,100	-500	-7.6%	-700	-10.3%
Construction	61,600	-2,100	-3.3%	-4,000	-6.1%
Manufacturing	157,200	-11,000	-6.5%	-10,100	-6.0%
<i>PRIVATE SERVICE-PROVIDING</i>	<i>813,400</i>	<i>-97,200</i>	<i>-10.7%</i>	<i>-111,500</i>	<i>-12.1%</i>
Trade, Transportation and Utilities	252,800	-10,900	-4.1%	-12,400	-4.7%
Information	16,400	-1,500	-8.4%	-1,800	-9.9%
Financial Activities	76,100	-500	-0.7%	-900	-1.2%
Professional and Business Services	166,300	-8,300	-4.8%	-13,400	-7.5%
Education and Health Services	182,700	-19,600	-9.7%	-19,000	-9.4%
Leisure and Hospitality	77,700	-46,300	-37.3%	-53,000	-40.6%
Other Services	41,400	-10,100	-19.6%	-11,000	-21.0%

Industries in green added the most jobs over the year, and industries in red lost the most jobs over the year.

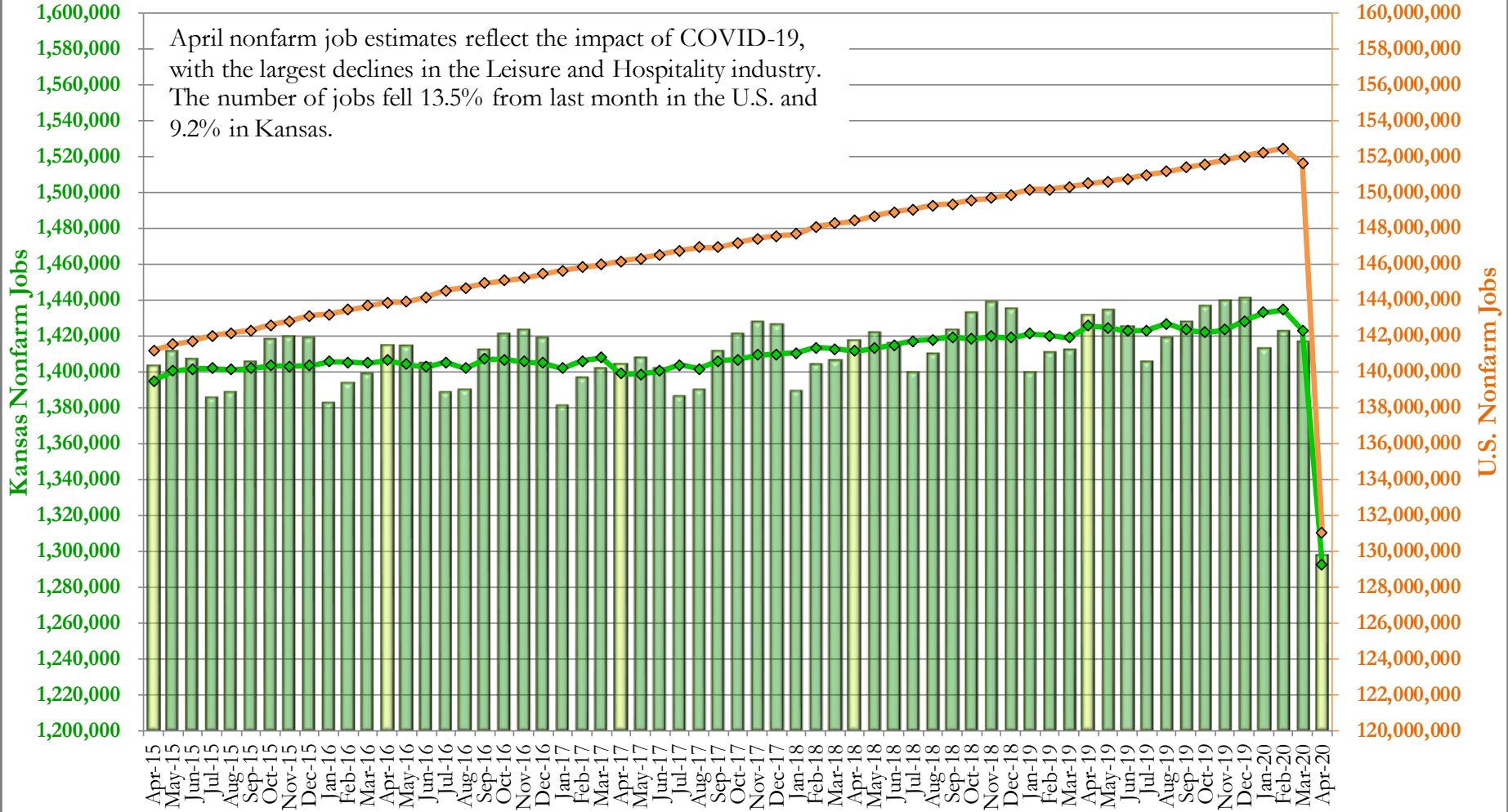
Nonfarm job statistics on subsectors will be furnished upon request.

Source: Kansas Department of Labor, Labor Market Information Services and the Bureau of Labor Statistics; Current Employment Statistics (CES)

Nonfarm Jobs Kansas and U.S. April 2015 to April 2020

■ Kansas Jobs
 ◆ Kansas Jobs (Seasonally Adjusted)
 ◇ U.S. Jobs (Seasonally Adjusted)

April nonfarm job estimates reflect the impact of COVID-19, with the largest declines in the Leisure and Hospitality industry. The number of jobs fell 13.5% from last month in the U.S. and 9.2% in Kansas.



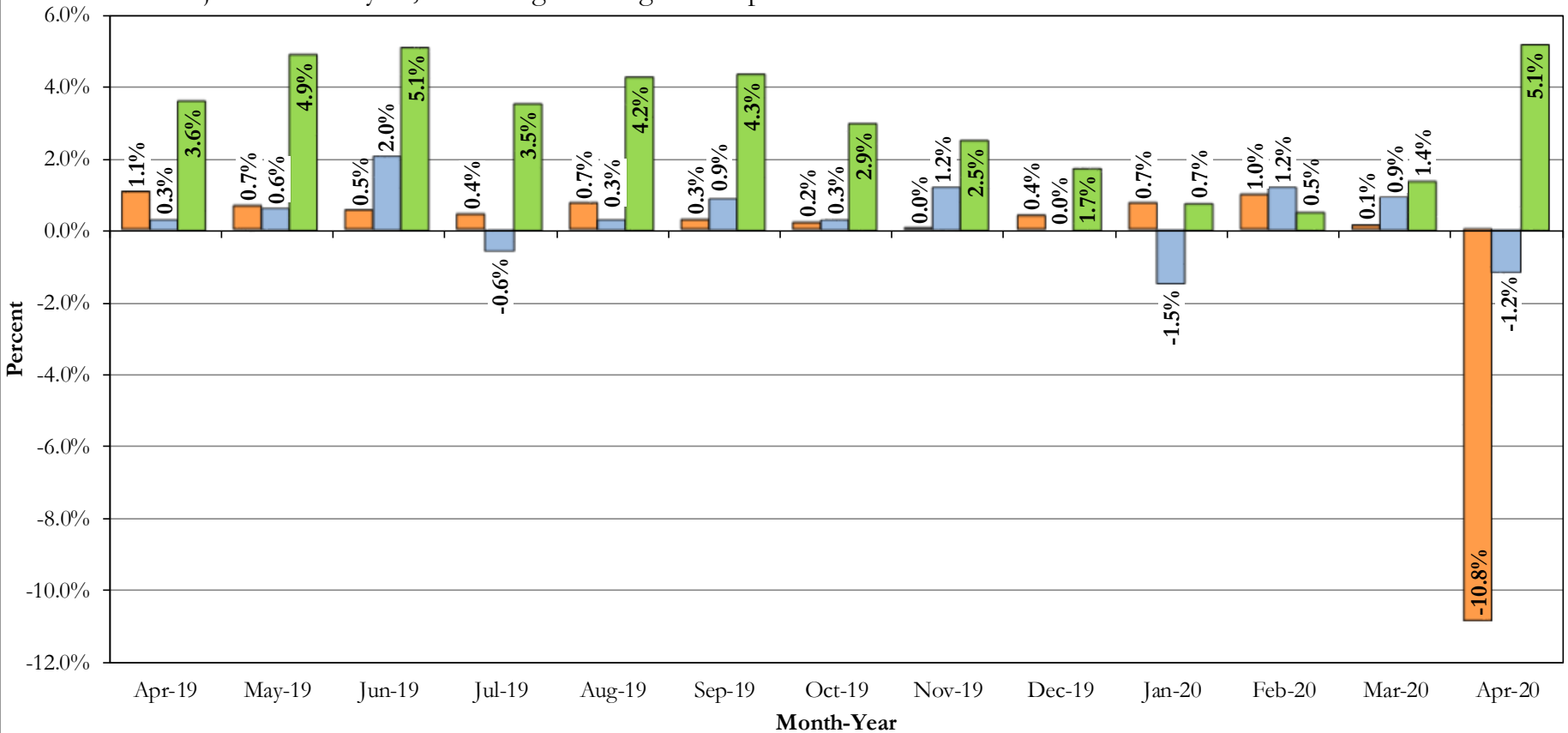
Source: Kansas Department of Labor, Labor Market Information Services and the Bureau of Labor Statistics; Current Employment Statistics (CES)

Over-the-Year Percent Change in Jobs, Not Seasonally Adjusted (KS) -9.4%
 Over-the-Year Percent Change in Jobs, Not Seasonally Adjusted (US) -12.9%

**Over-the-Year Change in Private Sector Jobs, Average Weekly Hours, and Real Hourly Earnings
Not Seasonally Adjusted
Kansas
April 2019 to April 2020**

■ **Jobs**
■ **Average Weekly Hours**
■ **Real Hourly Earnings**

The number of private sector jobs and average weekly hours worked decreased compared to last April. Real hourly earnings increased over-the-year because the industries with the largest percent decline in jobs have lower average hourly earnings than the total for all private sector industries. Since these industries represent a smaller proportion of private sector jobs than last year, the average earnings for all private sector industries increased.



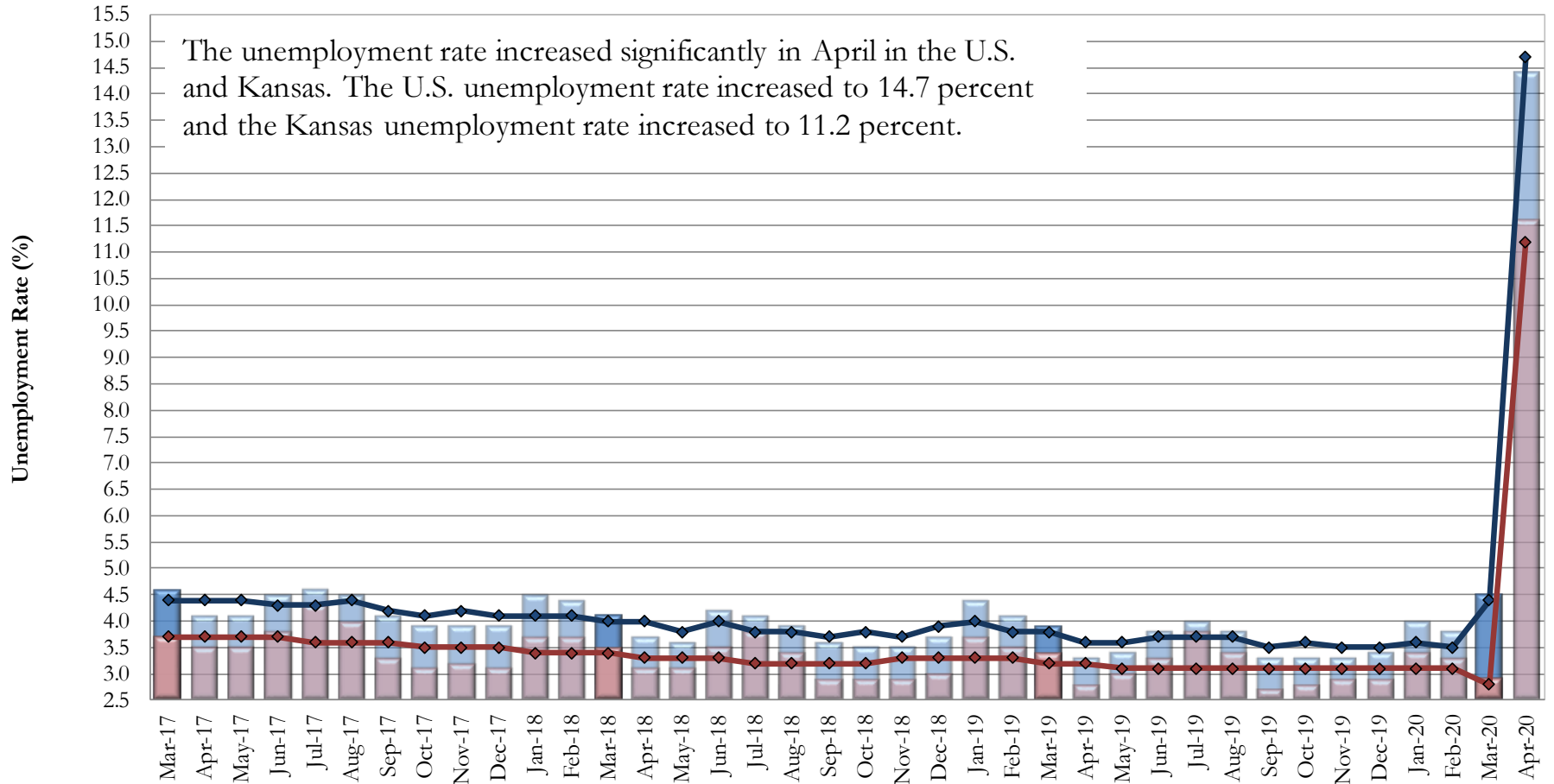
Source: Kansas Department of Labor, Labor Market Information Services and the Bureau of Labor Statistics; Current Employment Statistics (CES)

HOUSEHOLD DATA

Local Area Unemployment Statistics (LAUS)

- The labor force decreased by a net of 11,661 individuals to a total of 1,496,890 participants over the month. Estimates are seasonally adjusted.
- Employment decreased by a net of 137,334 individuals to 1,328,573 over the month. Estimates are seasonally adjusted.
- The pool of the unemployed increased by a net of 125,673 individuals to 168,317 over the month. Estimates are seasonally adjusted.
- The unemployment increased to 11.2% in April. Estimates are seasonally adjusted. The revised unemployment rate for March is 2.8%.
- Over the last 12 months the unemployment rate increased from 3.2% in April 2019 to 11.2% in April 2020. Estimates are seasonally adjusted.

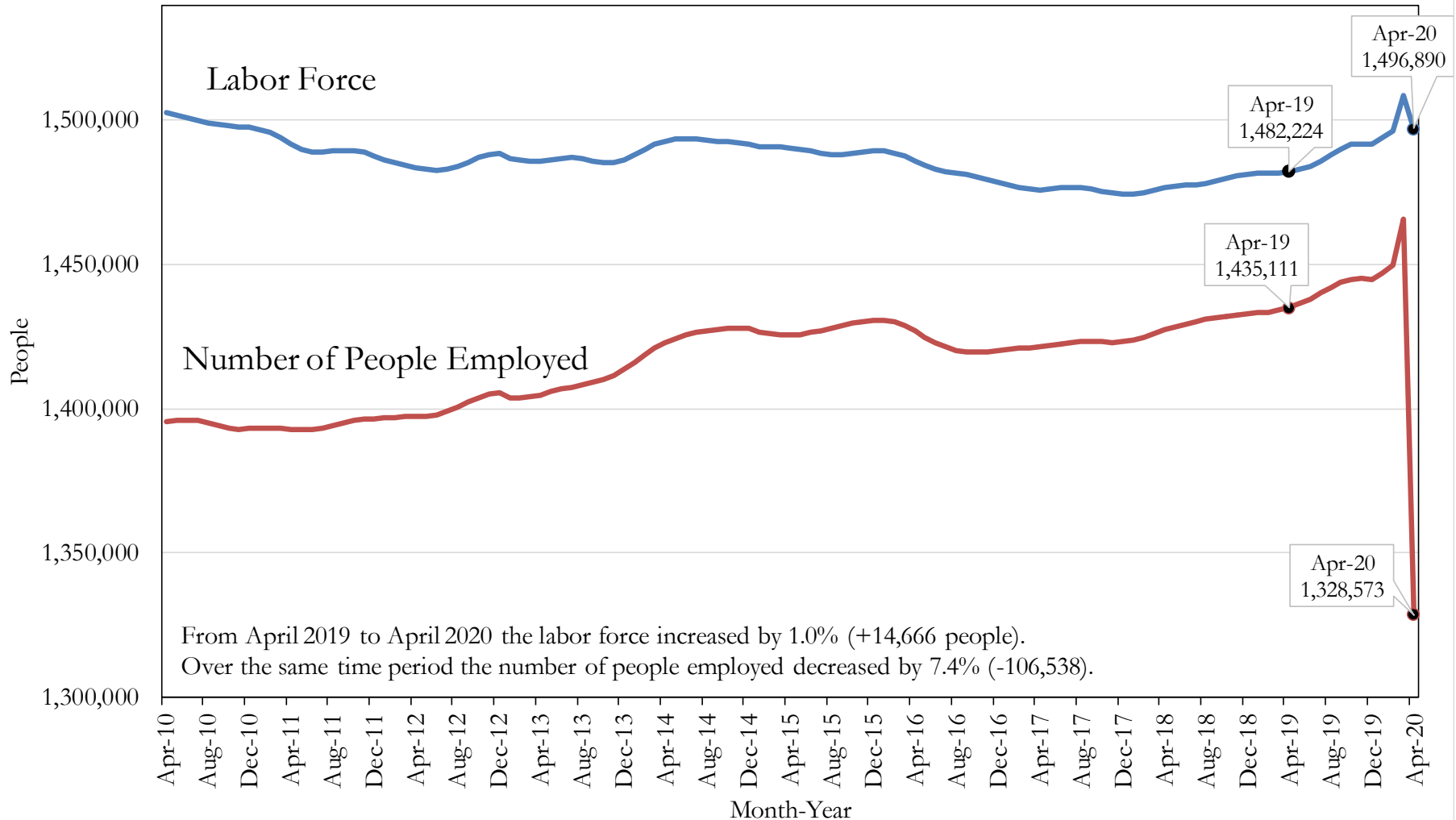
Unemployment Rate Kansas and U.S. April 2017 - April 2020



	Mar-17	Apr-17	May-17	Jun-17	Jul-17	Aug-17	Sep-17	Oct-17	Nov-17	Dec-17	Jan-18	Feb-18	Mar-18	Apr-18	May-18	Jun-18	Jul-18	Aug-18	Sep-18	Oct-18	Nov-18	Dec-18	Jan-19	Feb-19	Mar-19	Apr-19	May-19	Jun-19	Jul-19	Aug-19	Sep-19	Oct-19	Nov-19	Dec-19	Jan-20	Feb-20	Mar-20	Apr-20	
U.S.	4.6	4.1	4.1	4.5	4.6	4.5	4.1	3.9	3.9	3.9	4.5	4.4	4.1	3.7	3.6	4.2	4.1	3.9	3.6	3.5	3.5	3.7	4.4	4.1	3.9	3.3	3.4	3.8	4.0	3.8	3.3	3.3	3.3	3.3	3.4	4.0	3.8	4.5	14.4
Kansas	3.7	3.5	3.5	3.8	4.3	4.0	3.3	3.1	3.2	3.1	3.7	3.7	3.5	3.1	3.1	3.5	3.8	3.4	2.9	2.9	2.9	3.0	3.7	3.5	3.4	2.8	3.0	3.3	3.8	3.4	2.7	2.8	2.9	2.9	3.4	3.3	2.9	11.6	
U.S. SA	4.4	4.4	4.4	4.3	4.3	4.4	4.2	4.1	4.2	4.1	4.1	4.1	4.0	4.0	3.8	4.0	3.8	3.8	3.7	3.8	3.7	3.9	4.0	3.8	3.8	3.6	3.6	3.7	3.7	3.7	3.5	3.6	3.5	3.5	3.6	3.5	4.4	14.7	
Kansas SA	3.7	3.7	3.7	3.7	3.6	3.6	3.6	3.5	3.5	3.5	3.4	3.4	3.4	3.3	3.3	3.3	3.2	3.2	3.2	3.2	3.3	3.3	3.3	3.3	3.2	3.2	3.1	3.1	3.1	3.1	3.1	3.1	3.1	3.1	3.1	3.1	2.8	11.2	

Source: Kansas Department of Labor, Labor Market Information Services and the Bureau of Labor Statistics; Local Area Unemployment Statistics (LAUS)

Labor Force and Employment Seasonally Adjusted Kansas April 2010 to April 2020



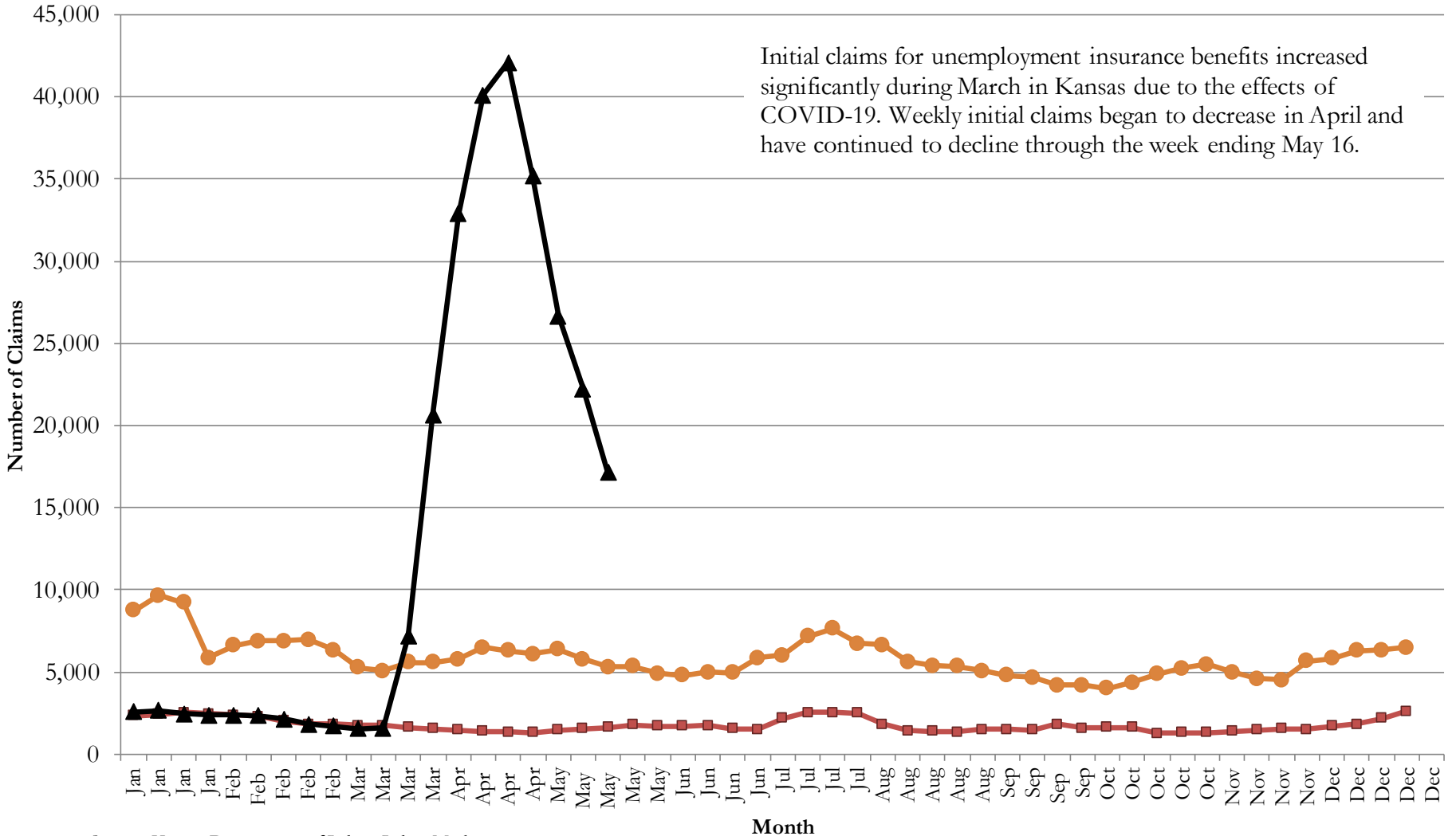
UNEMPLOYMENT INSURANCE CLAIMS

Estimates are not seasonally adjusted

- Over the year, initial claims increased by 117,870 and continued claims increased by 373,303 claims (these numbers include all programs). Estimates are not seasonally adjusted.
- The number of individuals receiving unemployment insurance benefits increased by 79,622 over the month, and increased by 99,934 from April 2019.
- The average duration of benefit receipt is 5.1 weeks, a decrease of 2.6 from last month and a decrease of 6.4 over the past 12 months (average duration is measured with a 12 month moving average).

Weekly Initial Claims (4-Week Moving Average)
Kansas
2009, 2019, and 2020

—●— 2009 —■— 2019 —▲— 2020



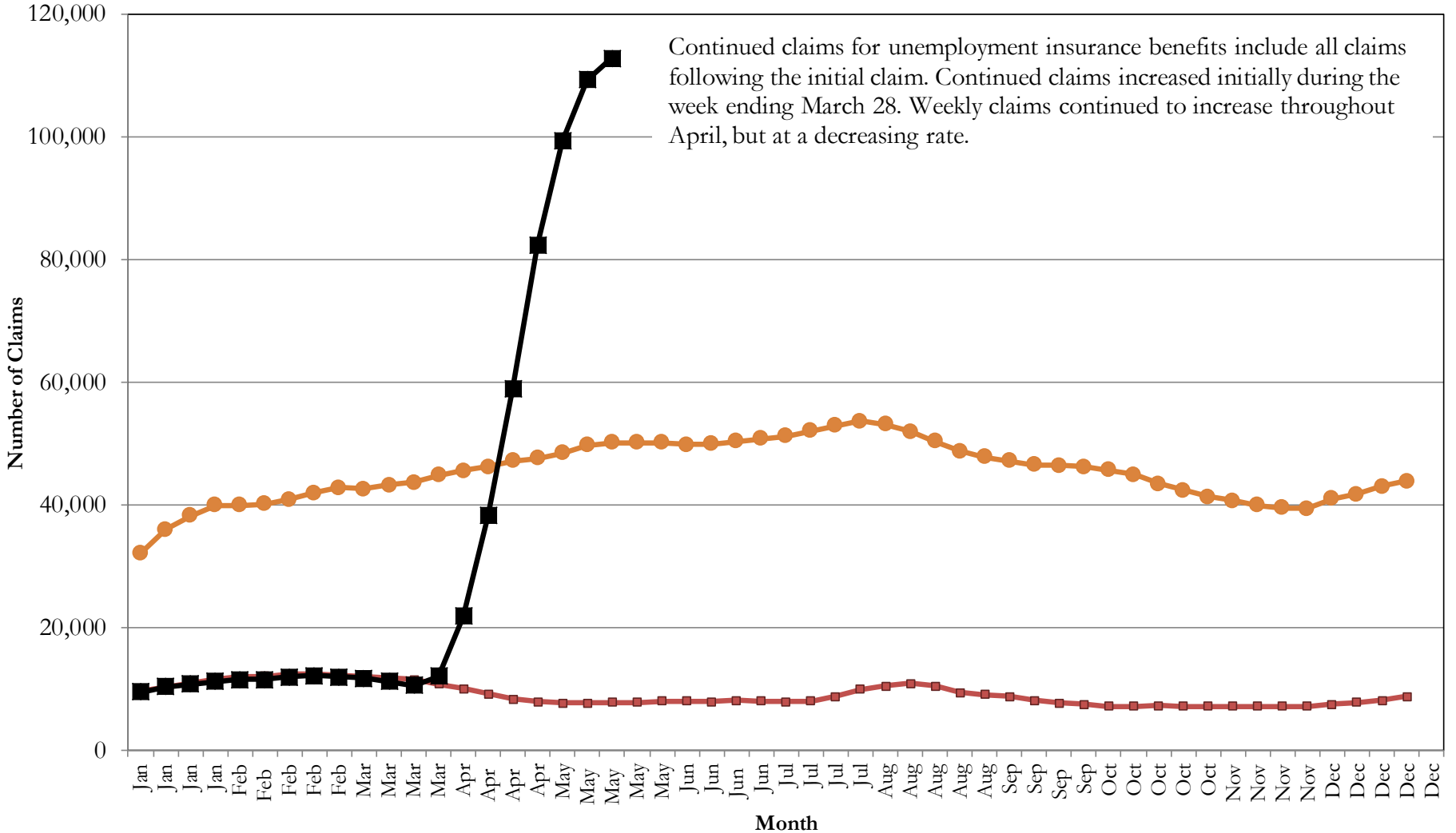
Source: Kansas Department of Labor, Labor Market Information Services; Unemployment Insurance Statistics

Each data point represents an average of initial claims for the current week and three preceding weeks.

Weekly Continued Claims (4-Week Moving Average)

Kansas
2009, 2019, 2020

2009 2019 2020

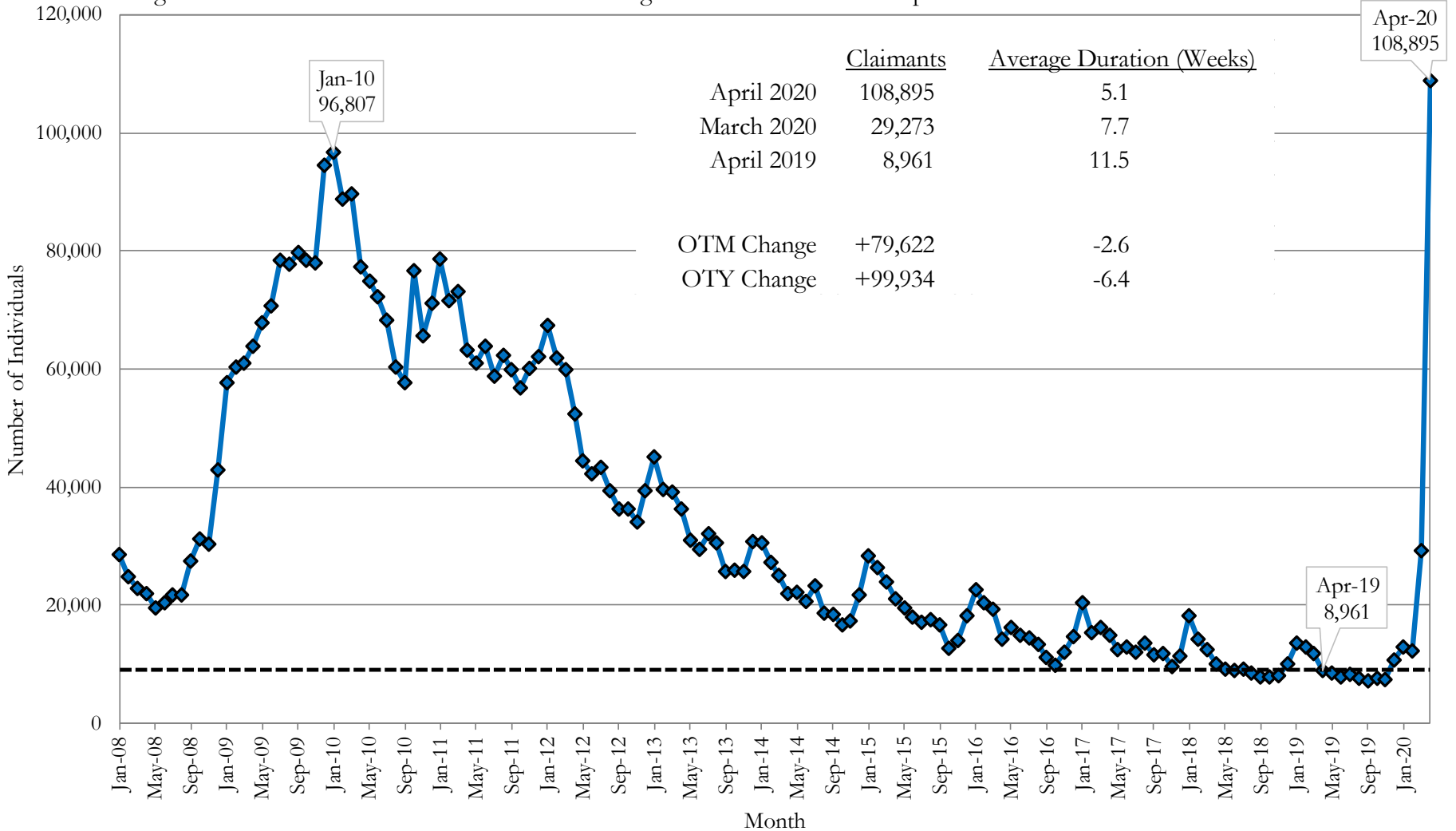


Source: Kansas Department of Labor, Labor Market Information Services; Unemployment Insurance Statistics

Each data point represents an average of continued claims for the current week and three preceding weeks.

Number of Individuals Receiving Unemployment Insurance Benefits Kansas January 2008 to April 2020

The number of people receiving unemployment insurance benefits has increased by 96,538 since February 2020. This significant increase in new claims caused the average duration of benefit receipt to decrease to 5.1 weeks.



Source: Kansas Department of Labor, Labor Market Information Services; Unemployment Insurance Statistics