

Review and Analysis for July 2017

(Embargoed until August 18, 2017)

Summary



- June nonfarm job estimates were revised downward by 3,600 jobs from 1,403,400 to 1,399,800. Private sector jobs were revised downward by 2,100 jobs from 1,147,500 to 1,145,400. Estimates are seasonally adjusted.
- Kansas gained 1,300 jobs over the month. Over the past 12 months, the number of nonfarm jobs decreased by 10,800 jobs. Estimates are seasonally adjusted.
- The private sector lost 1,200 jobs over the month, or 0.1%. The largest losses were in Leisure and Hospitality (-2,000) and Trade, Transportation and Utilities (-1,200). Over the past 12 months, the private sector lost 12,100 jobs. Estimates are seasonally adjusted.
- Average weekly hours worked in the private sector increased over the year from 33.8 hours to 34.6 hours in July 2017. Average nominal hourly earnings increased by \$0.40 to \$23.09 (+1.8%). Average nominal weekly earnings increased by \$31.99 (+4.2%) over the past 12 months. Estimates are not seasonally adjusted.
- In July the labor force decreased by 179, the pool of unemployed increased by 1,007 and employment decreased by 1,186. Estimates are seasonally adjusted.
- The unemployment rate remained at 3.7% in July. Estimates are seasonally adjusted.
- Over the past 12 months, initial claims decreased by 3,748 and continued claims decreased by 1,717 (these numbers include all programs). The number of individuals receiving unemployment insurance benefits decreased by 2,599 over the year. Average duration of benefit receipt decreased by 0.6 weeks over the past 12 months. Estimates are not seasonally adjusted.

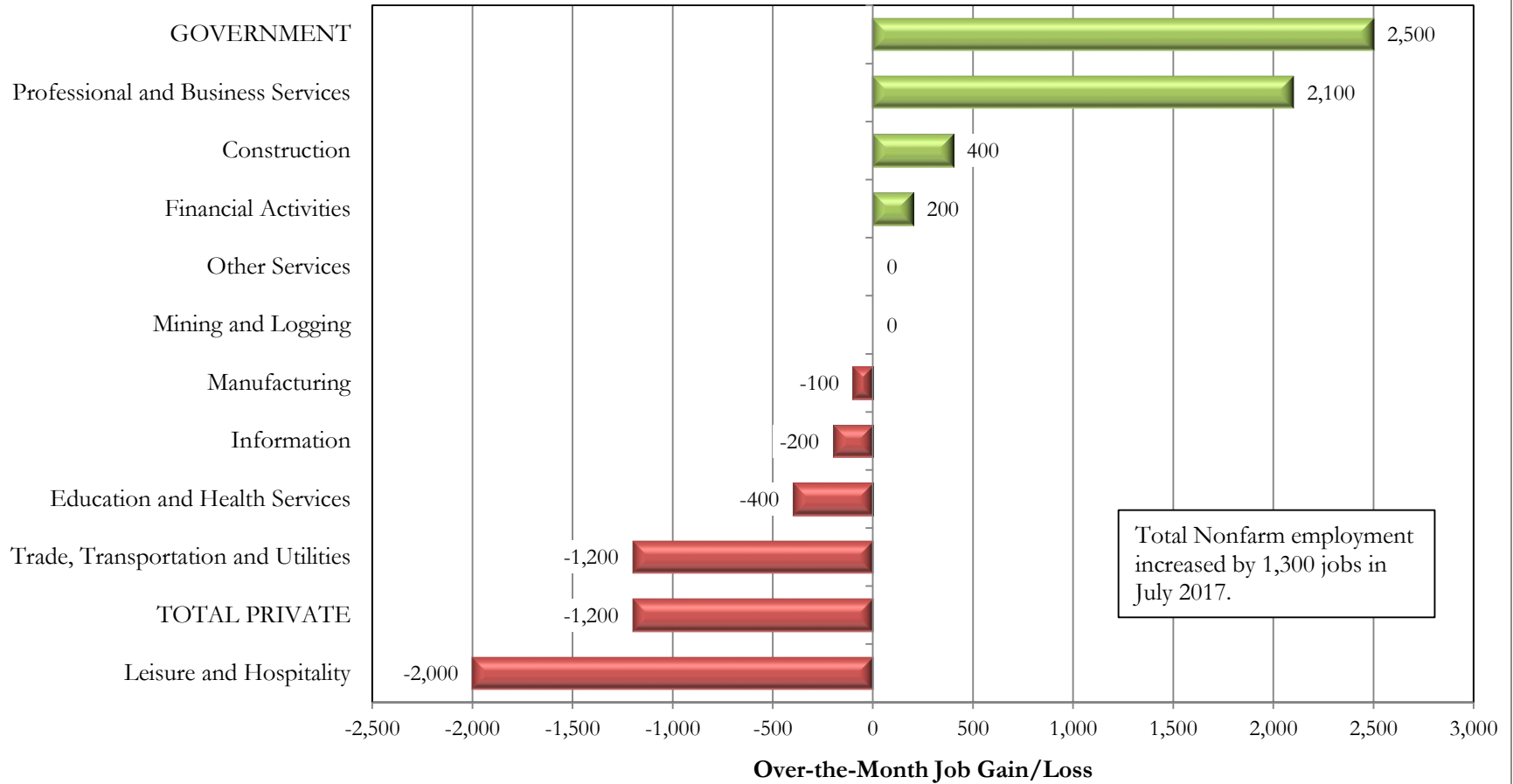
For more information, contact:
Barbara Hersh
Marketing and Comm. Director
401 S.W. Topeka Blvd
Topeka, KS 66603
Phone: 785-296-0901
Fax: 785-296-0753

Over-the-Month Change in Employment (seasonally adjusted)

Kansas

July 2017

Five of the 11 major sectors lost jobs over the month while four gained jobs.



Source: Kansas Department of Labor, Labor Market Information Services, in conjunction with the Bureau of Labor Statistics, Current Employment Statistics (CES) program.

July 2017 Not Seasonally Adjusted Nonfarm Jobs

Place of Work Data

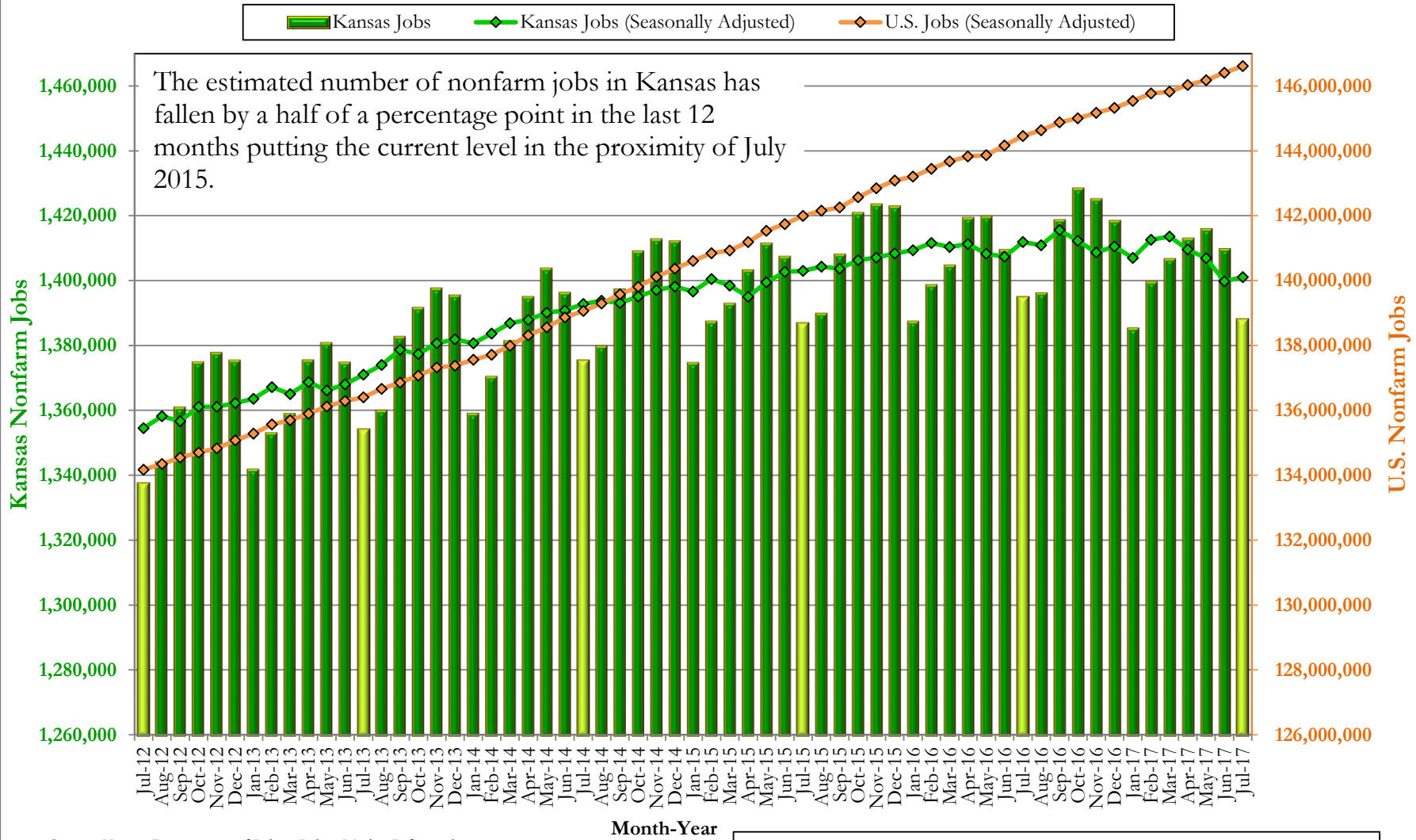
	July 2017	Month Change		12 Month Change	
		Absolute	Percent	Absolute	Percent
TOTAL NONFARM	1,387,900	-21,700	-1.5%	-6,800	-0.5%
GOVERNMENT	232,800	-17,700	-7.1%	500	0.2%
TOTAL PRIVATE	1,155,100	-4,000	-0.3%	-7,300	-0.6%
<i>GOODS-PRODUCING</i>	<i>231,000</i>	<i>800</i>	<i>0.3%</i>	<i>600</i>	<i>0.3%</i>
Mining and Logging	7,100	200	2.9%	200	2.9%
Construction	65,000	1,100	1.7%	1,100	1.7%
Manufacturing	158,900	-500	-0.3%	-700	-0.4%
<i>PRIVATE SERVICE-PROVIDING</i>	<i>924,100</i>	<i>-4,800</i>	<i>-0.5%</i>	<i>-7,900</i>	<i>-0.8%</i>
Trade, Transportation and Utilities	265,700	-1,500	-0.6%	-2,600	-1.0%
Information	19,100	-300	-1.5%	-1,700	-8.2%
Financial Activities	86,700	500	0.6%	0	0.0%
Professional and Business Services	179,800	1,500	0.8%	300	0.2%
Education and Health Services	195,100	-1,800	-0.9%	-300	-0.2%
Leisure and Hospitality	128,700	-3,200	-2.4%	-2,300	-1.8%
Other Services	49,000	0	0.0%	-1,300	-2.6%

Industries in green added the most jobs over the year, and industries in red lost the most jobs over the year.

Nonfarm job statistics on subsectors will be furnished upon request.

Source: Kansas Department of Labor, Labor Market Information Services, in conjunction with the Bureau of Labor Statistics, Current Employment Statistics (CES) program.

Nonfarm Jobs Kansas and U.S. July 2012 to July 2017



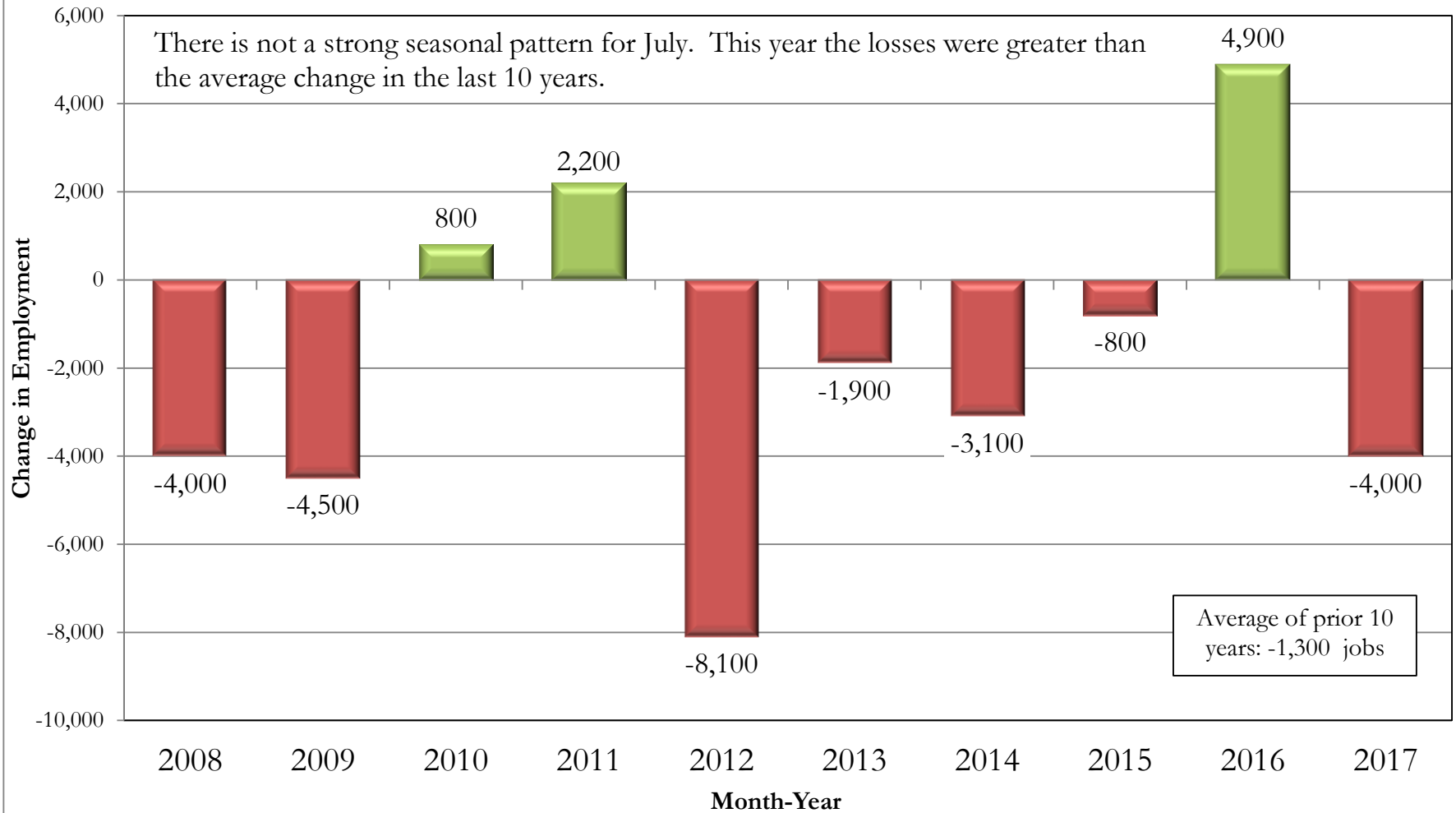
Source: Kansas Department of Labor, Labor Market Information Services, in conjunction with the Bureau of Labor Statistics, Current Employment Statistics (CES) program.

Over-the-Year Percent Change in Jobs, Not Seasonally Adjusted (KS) -0.5%
 Over-the-Year Percent Change in Jobs, Not Seasonally Adjusted (US) +1.5%

Over-the-Month Change in Private Sector Jobs (not seasonally adjusted)

Kansas

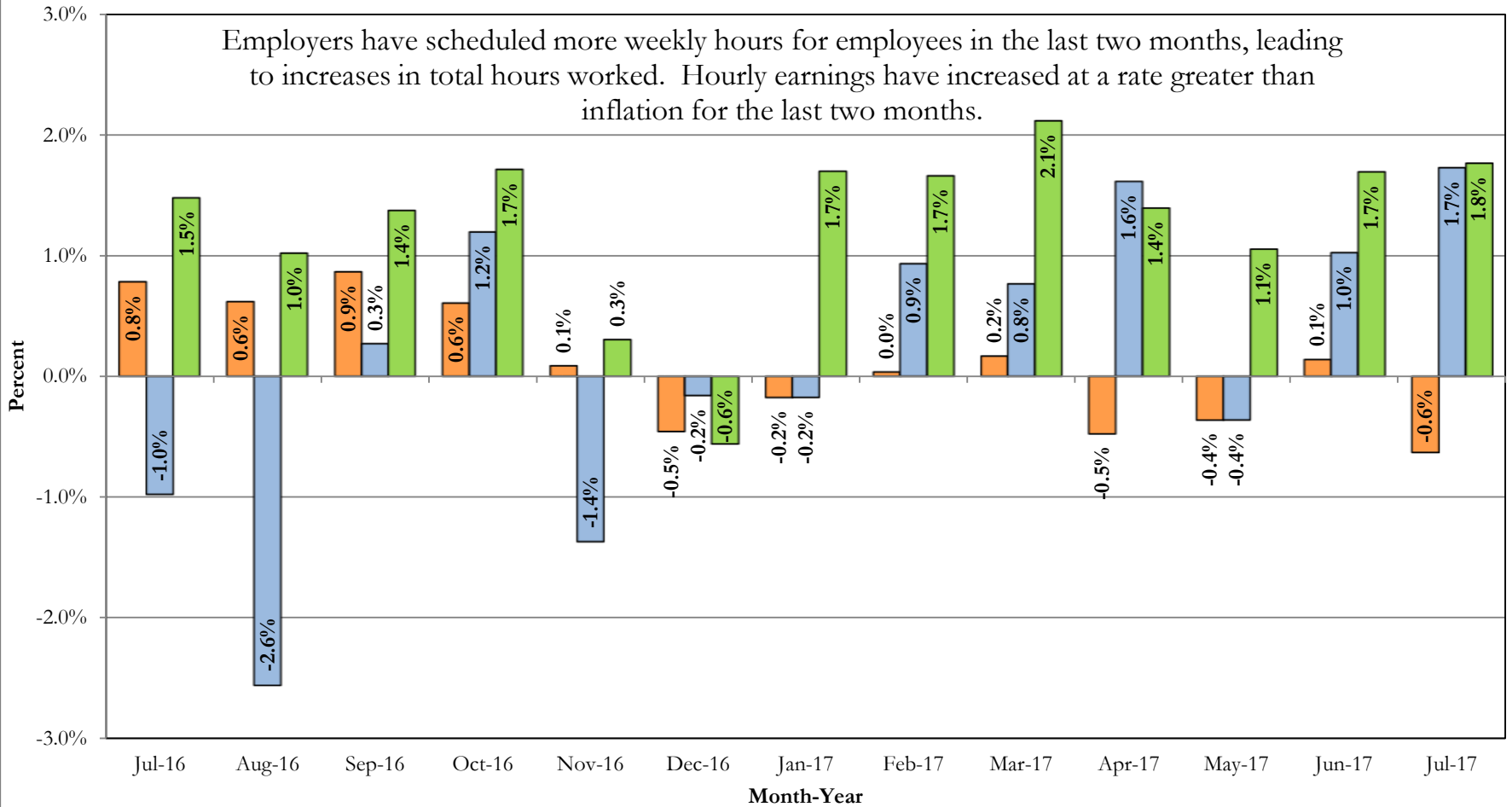
July 2008 - July 2017



Source: Kansas Department of Labor, Labor Market Information Services, in conjunction with the Bureau of Labor Statistics, Current Employment Statistics (CES) program.

Over-the-Year Change in Private Sector Jobs, Total Hours Worked, and Hourly Earnings
Kansas
July 2016 to July 2017

■ **Jobs**
 ■ **Total Hours Worked**
 ■ **Hourly Earnings**

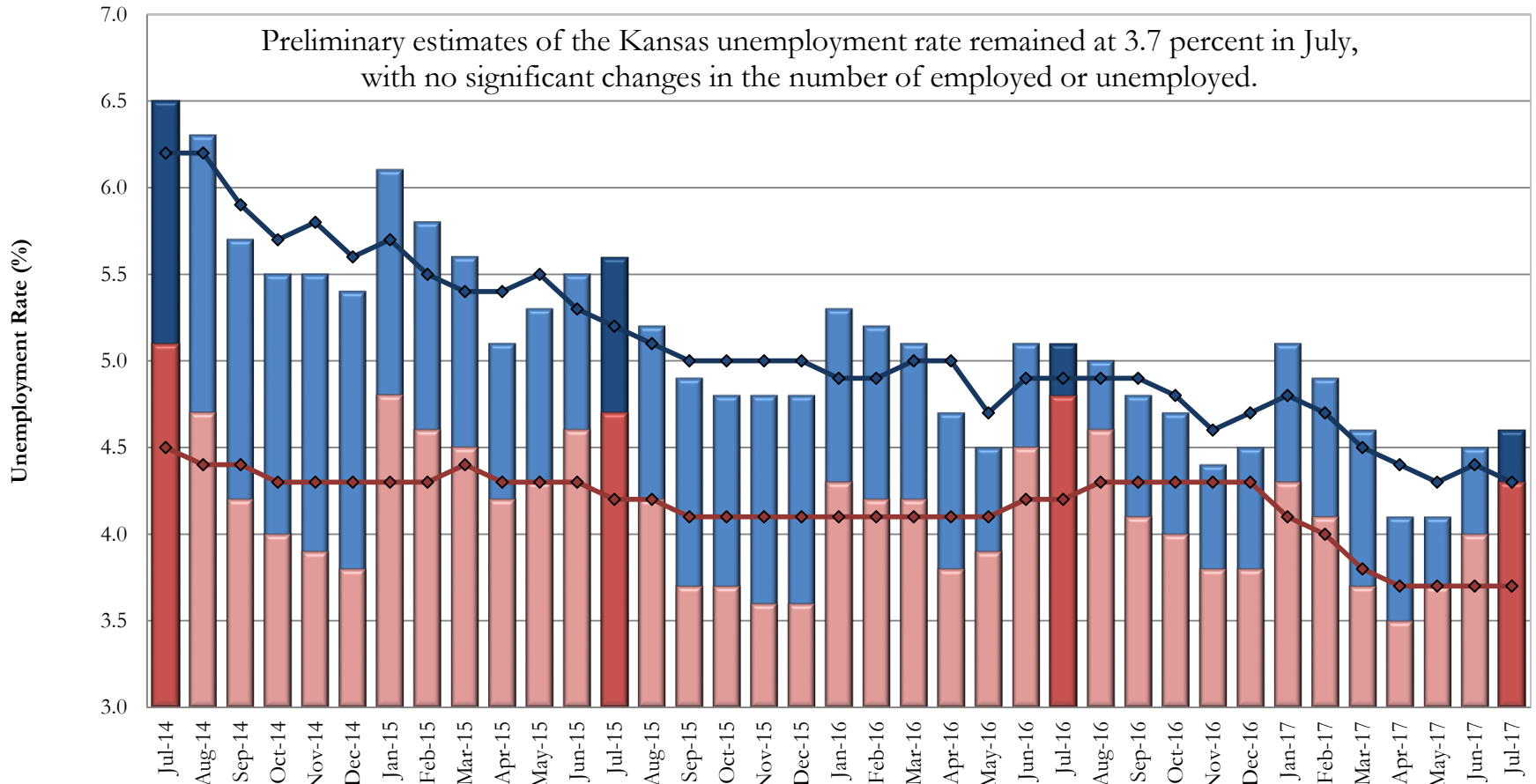


Source: Kansas Department of Labor, Labor Market Information Services, in conjunction with the Bureau of Labor Statistics, Current Employment Statistics (CES) program.

HOUSEHOLD DATA

- The labor force decreased by a net of 179 individuals to a total of 1,482,735 participants over the month. Estimates are seasonally adjusted.
- Employment decreased by a net of 1,186 individuals to 1,427,140 over the month. Estimates are seasonally adjusted.
- The pool of the unemployed increased by a net of 1,007 individuals to 55,595 over the month. Estimates are seasonally adjusted.
- The unemployment rate remained at 3.7% in July. Estimates are seasonally adjusted. The unemployment rate for June was not revised.
- Over the last 12 months the unemployment rate fell from 4.2% in July 2016 to 3.7% in July 2017. Estimates are seasonally adjusted.

Unemployment Rate Kansas and U.S. July 2014 - July 2017



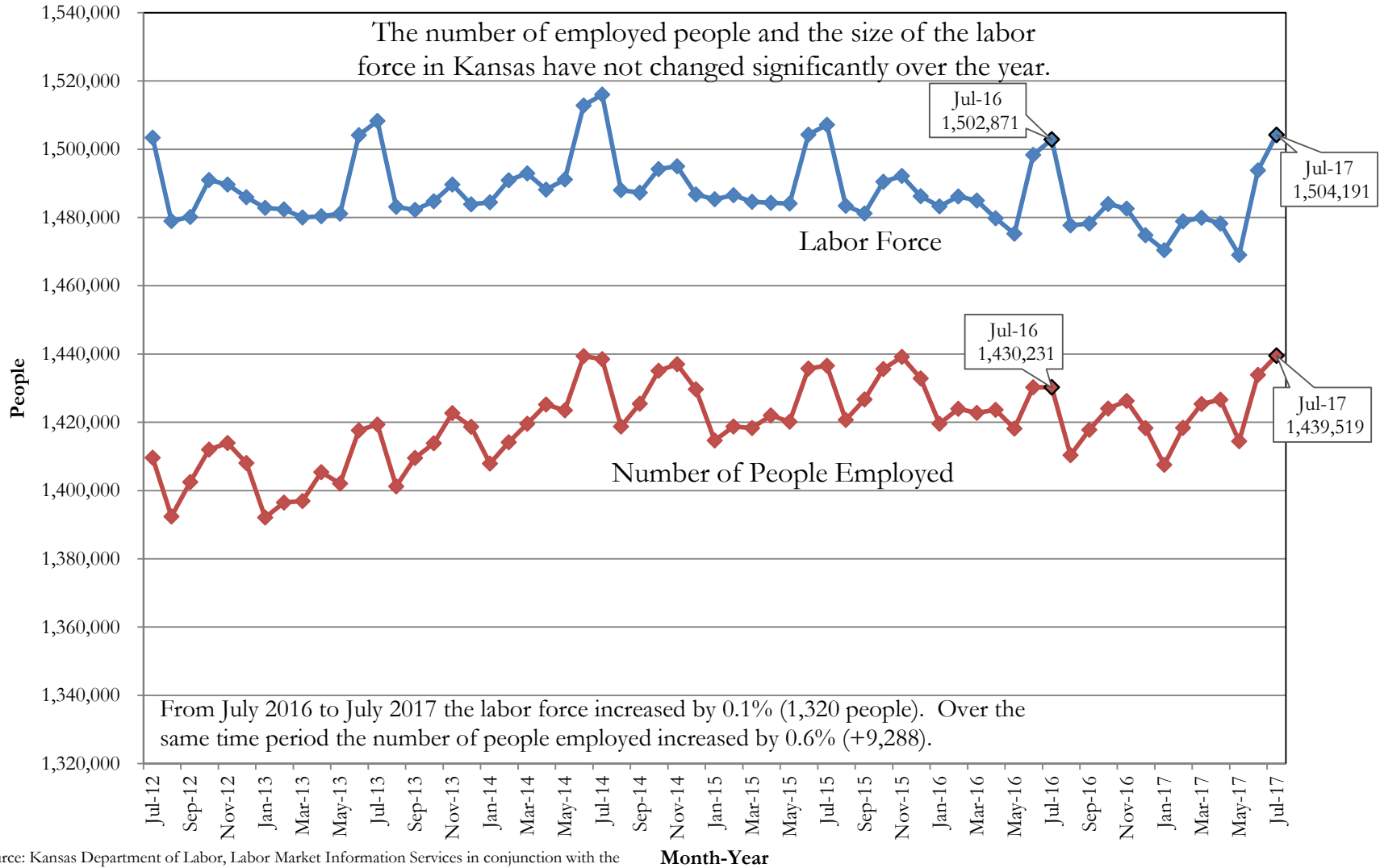
	Jul-14	Aug-14	Sep-14	Oct-14	Nov-14	Dec-14	Jan-15	Feb-15	Mar-15	Apr-15	May-15	Jun-15	Jul-15	Aug-15	Sep-15	Oct-15	Nov-15	Dec-15	Jan-16	Feb-16	Mar-16	Apr-16	May-16	Jun-16	Jul-16	Aug-16	Sep-16	Oct-16	Nov-16	Dec-16	Jan-17	Feb-17	Mar-17	Apr-17	May-17	Jun-17	Jul-17		
U.S.	6.5	6.3	5.7	5.5	5.5	5.4	6.1	5.8	5.6	5.1	5.3	5.5	5.6	5.2	4.9	4.8	4.8	4.8	5.3	5.2	5.1	4.7	4.5	5.1	5.1	5.0	4.8	4.7	4.4	4.5	5.1	4.9	4.6	4.1	4.1	4.5	4.4	4.5	4.6
Kansas	5.1	4.7	4.2	4.0	3.9	3.8	4.8	4.6	4.5	4.2	4.3	4.6	4.7	4.2	3.7	3.7	3.6	3.6	4.3	4.2	4.2	3.8	3.9	4.5	4.8	4.6	4.1	4.0	3.8	3.8	4.3	4.1	3.7	3.5	3.7	4.0	4.3		
U.S. SA	6.2	6.2	5.9	5.7	5.8	5.6	5.7	5.5	5.4	5.4	5.5	5.3	5.2	5.1	5.0	5.0	5.0	5.0	4.9	4.9	5.0	5.0	4.7	4.9	4.9	4.9	4.9	4.8	4.6	4.7	4.8	4.7	4.5	4.4	4.3	4.4	4.4	4.4	4.3
Kansas SA	4.5	4.4	4.4	4.3	4.3	4.3	4.3	4.3	4.4	4.3	4.3	4.3	4.2	4.2	4.1	4.1	4.1	4.1	4.1	4.1	4.1	4.1	4.1	4.2	4.2	4.3	4.3	4.3	4.3	4.3	4.1	4.0	3.8	3.7	3.7	3.7	3.7	3.7	

Source: Local Area Unemployment Statistics Program, Labor Market Information Services, Kansas Department of Labor, in conjunction with the Bureau of Labor Statistics.

Labor Force and Employment (not seasonally adjusted)

Kansas

July 2012 to July 2017



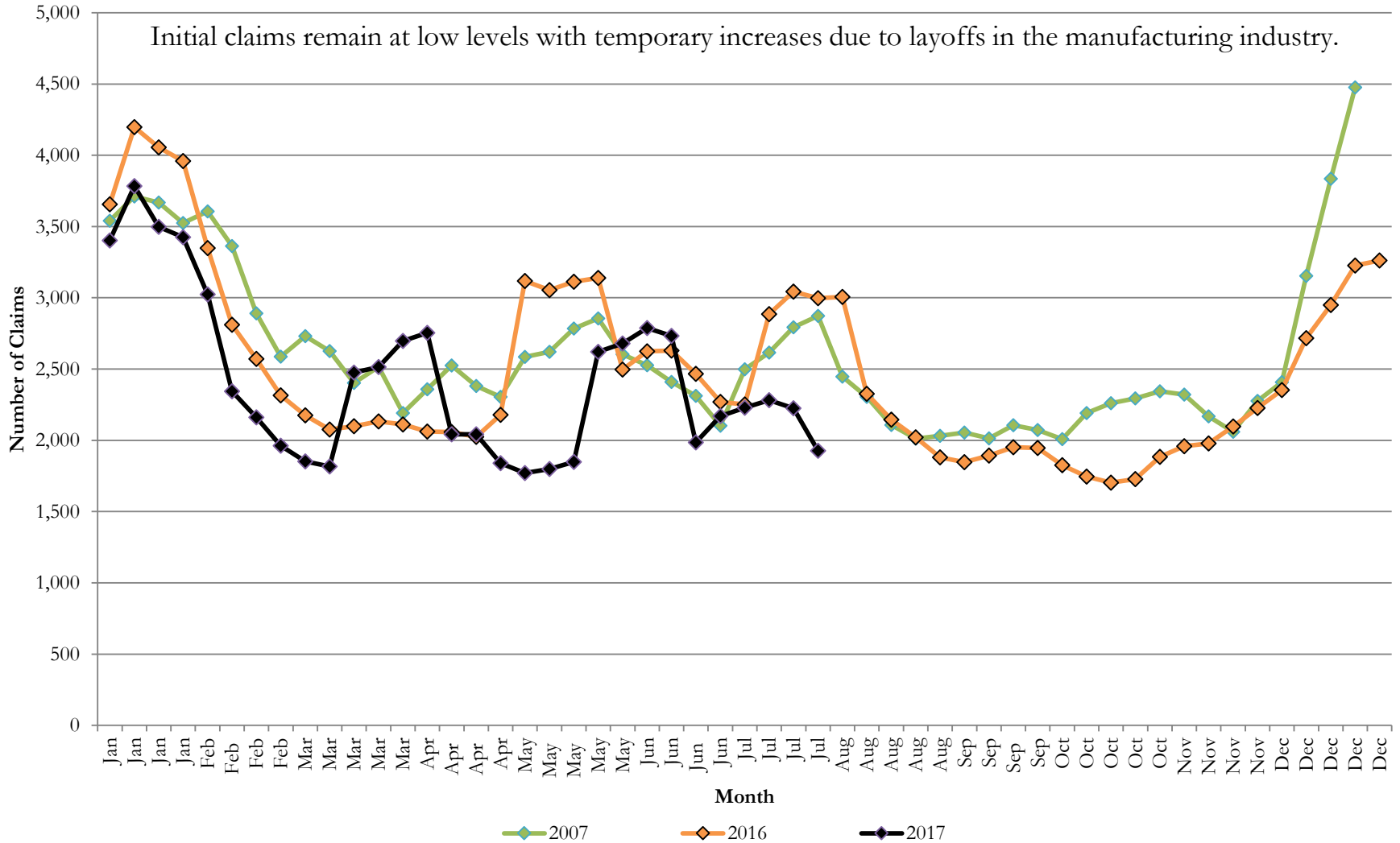
Source: Kansas Department of Labor, Labor Market Information Services in conjunction with the Bureau of Labor Statistics LAUS program.

UNEMPLOYMENT INSURANCE CLAIMS

Estimates are not seasonally adjusted

- Over the year, initial claims decreased by 3,748 and continued claims decreased by 1,717 claims (these numbers include all programs). Estimates are not seasonally adjusted.
- The number of individuals receiving unemployment insurance benefits decreased by 1,027 over the month, and decreased by 2,599 from July 2016.
- Average duration of benefit receipt increased by 0.1 weeks over the month and decreased by 0.6 weeks over the past 12 months to 10.9 weeks. (average duration is measured with a 12 month moving average).

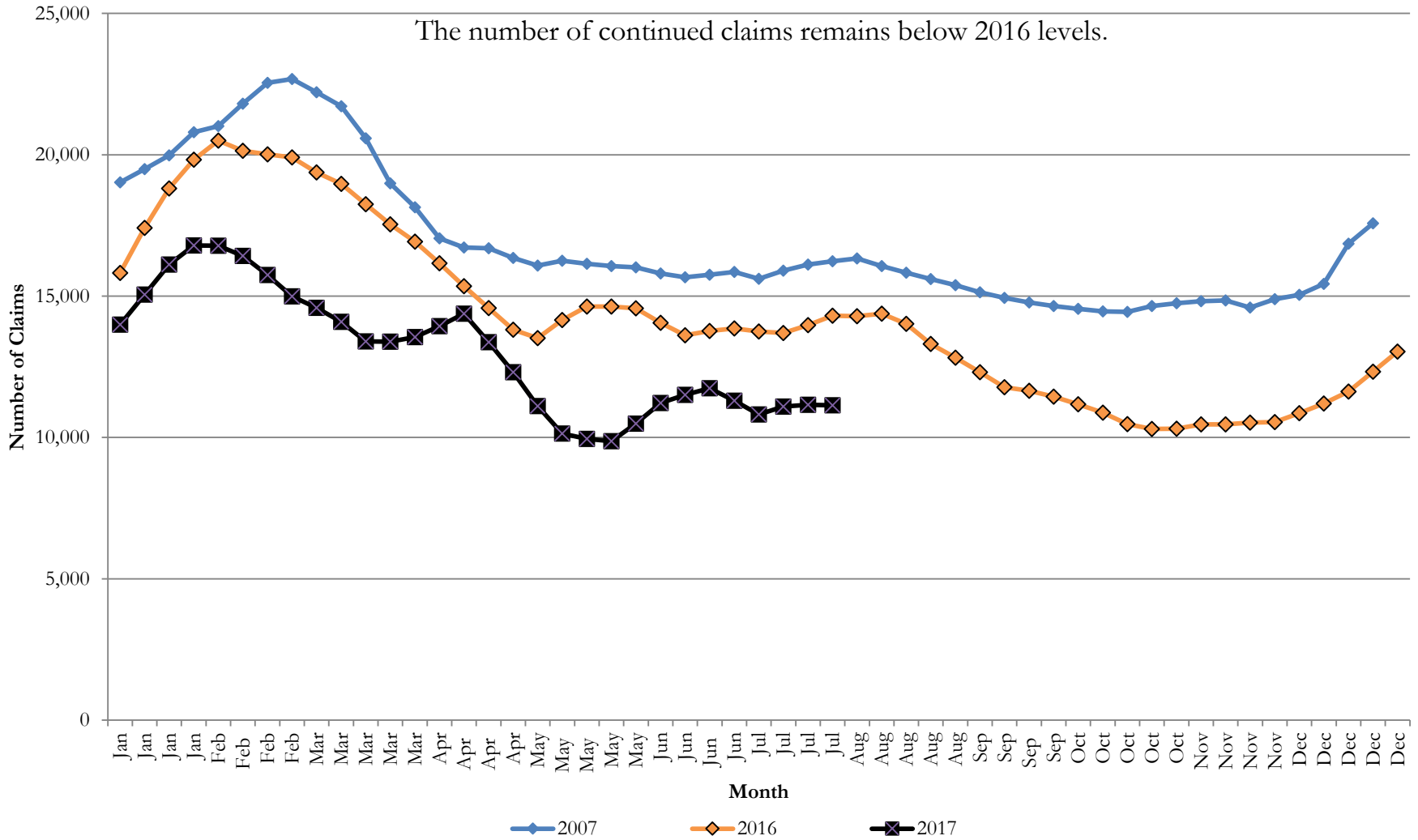
Weekly Initial Claims (4-Week Moving Average)
Kansas
2007, 2016, and 2017



Source: Kansas Department of Labor, Labor Market Information Services, Unemployment Insurance (UI) program.

Each data point represents an average of initial claims for the current week and three preceding weeks.

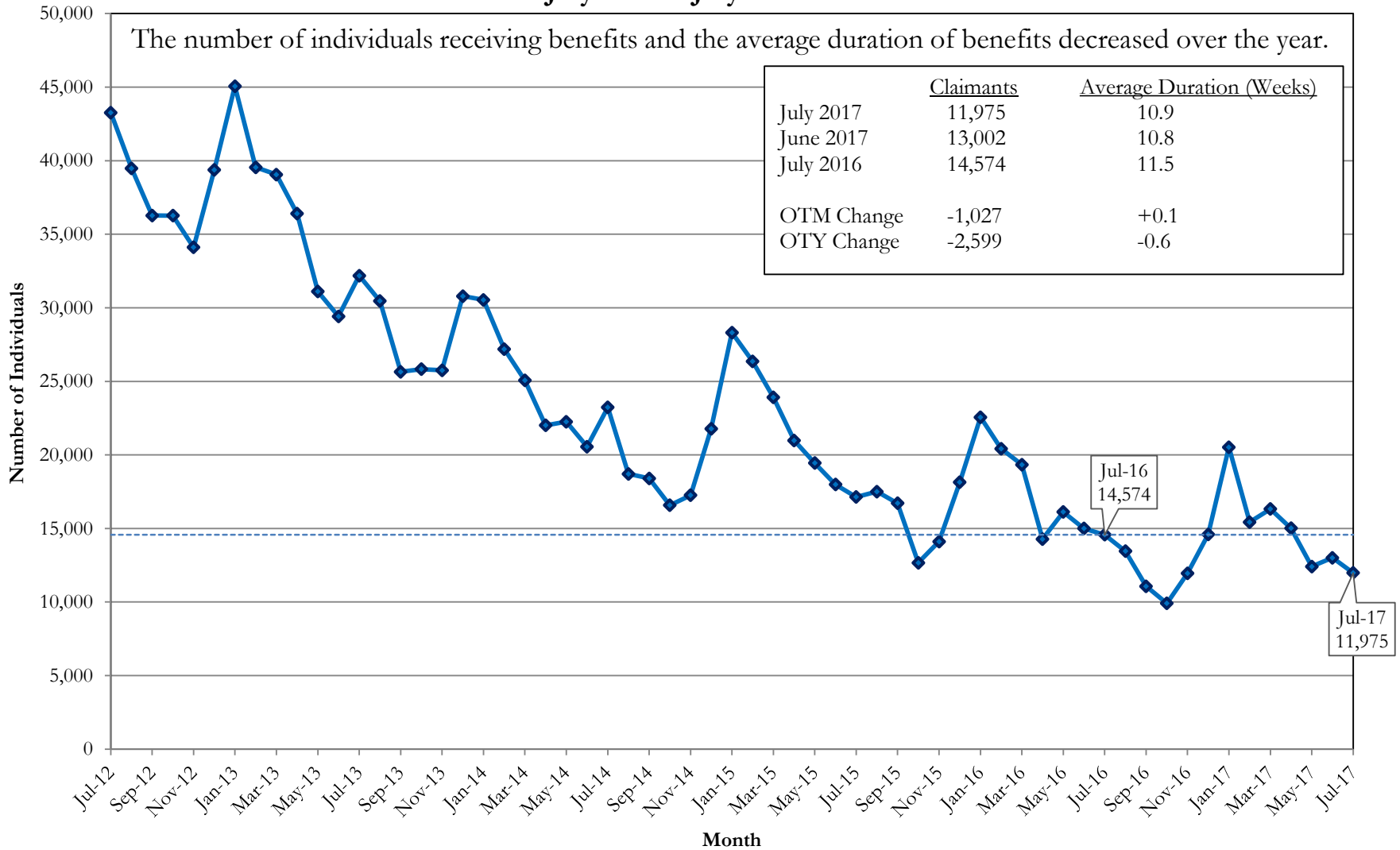
Weekly Continued Claims (4-Week Moving Average)
Kansas
2007, 2016, 2017



Source: Kansas Department of Labor, Labor Market Information Services, Unemployment Insurance (UI) program.

This graph reflects average weekly continued claims beginning in January 2007 to present. Each data point represents an average of continued claims for the current week and three preceding weeks.

Number of Individuals Receiving Unemployment Insurance Benefits Kansas July 2012 to July 2017



Source: Kansas Department of Labor, Labor Market Information Services, Unemployment Insurance (UI) program.