

Review and Analysis for September 2020

(Embargoed until October 16, 2020)

IMPORTANT NOTE: This release includes nonfarm jobs and labor force estimates for September 2020. Data collected for this report references the week including September 12th. Reopening decisions were transferred to local officials on May 26, 2020. Counties following the 'Ad Astra Plan to Reopen Kansas' moved to Phase Three on June 8, 2020, with recommendations to remain in Phase 3 issued on July 6, 2020.

Summary:

- Kansas lost 7,200 total nonfarm jobs in September 2020. This change was due to a loss of 900 private sector jobs and a loss of 6,300 government jobs.
- The unemployment rate decreased to 5.9 percent in September.
- In September 2020 there were 86,435 initial claims filed and 217,319 continued claims filed for regular unemployment insurance.



For more information, contact:

Jerry Grasso
Communications Director
401 S.W. Topeka Blvd
Topeka, KS 66603
Phone: 785-438-8185
Fax: 785-296-0753

INDUSTRY DATA

Current Employment Statistics (CES)

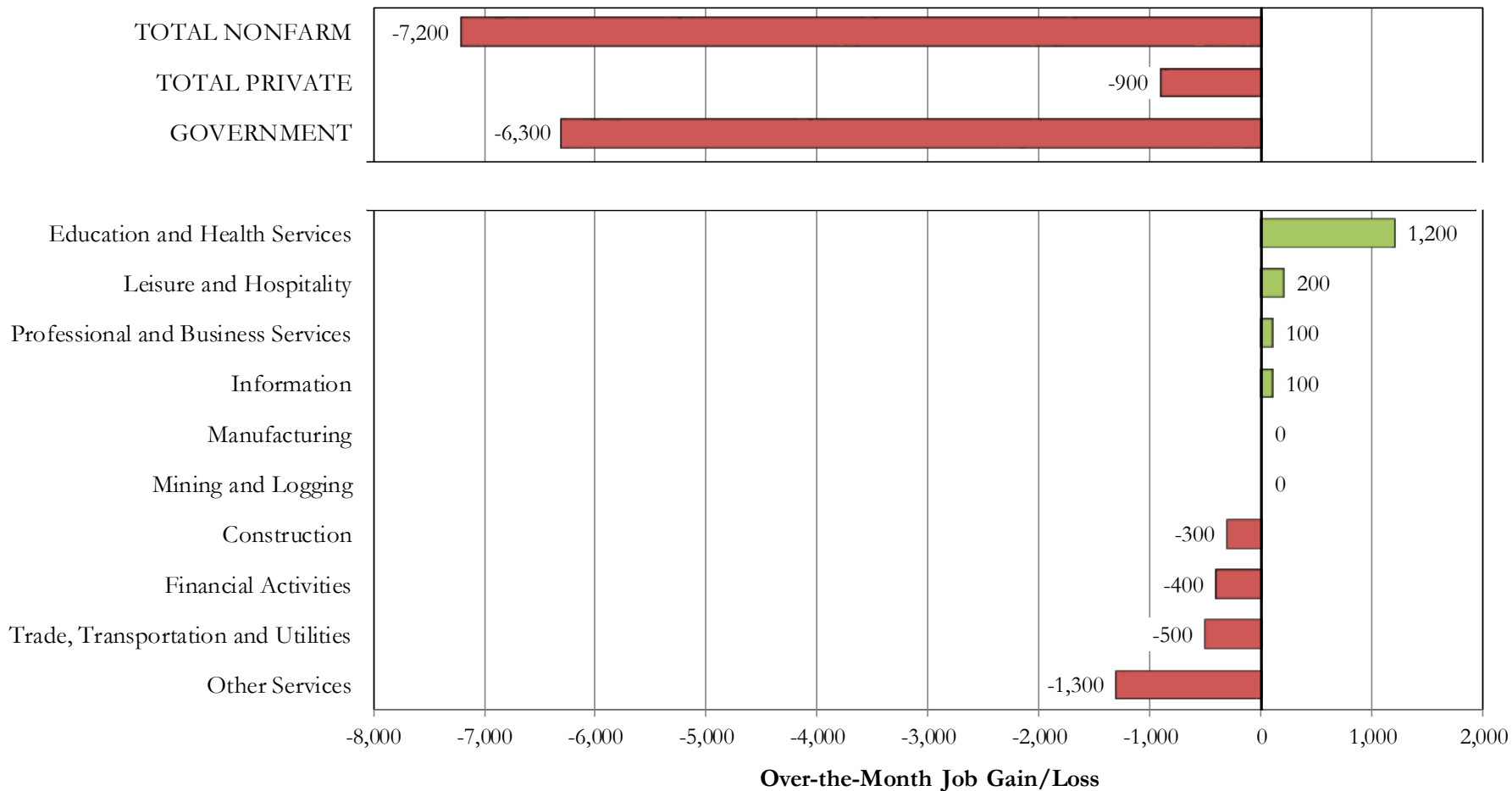
- Seasonally adjusted preliminary total nonfarm jobs estimates for August were revised upward by 2,500 jobs, from 1,365,100 to 1,367,600. Seasonally adjusted private sector jobs were revised upward by 2,100 jobs, from 1,111,900 to 1,114,000.
- Kansas lost 7,200 jobs over the month. Over the past 12 months, the number of nonfarm jobs decreased by a total of 63,000 jobs. Estimates are seasonally adjusted.
- The private sector lost 900 jobs over the month, or -0.1%. The largest losses were in Other Services (-1,300) and Trade, Transportation and Utilities (-500). Over the past 12 months, the private sector lost 49,700 jobs. Estimates are seasonally adjusted.
- Average weekly hours worked in the private sector decreased to 33.9 hours, a decrease of 1.1 hours from last September. Average nominal hourly earnings increased over-the-year by \$0.13 to \$25.89 (+0.5%). Average nominal weekly earnings decreased by \$23.93 to \$877.67 (-2.7%) over the past 12 months. Estimates are not seasonally adjusted.

Over-the-Month Change in Employment (seasonally adjusted)

Kansas

September 2020

Five of the major sectors suffered a loss, four added jobs, and two remained unchanged.



Source: Kansas Department of Labor, Labor Market Information Services and the Bureau of Labor Statistics; Current Employment Statistics (CES)

September 2020 Not Seasonally Adjusted Nonfarm Jobs

Place of Work Data

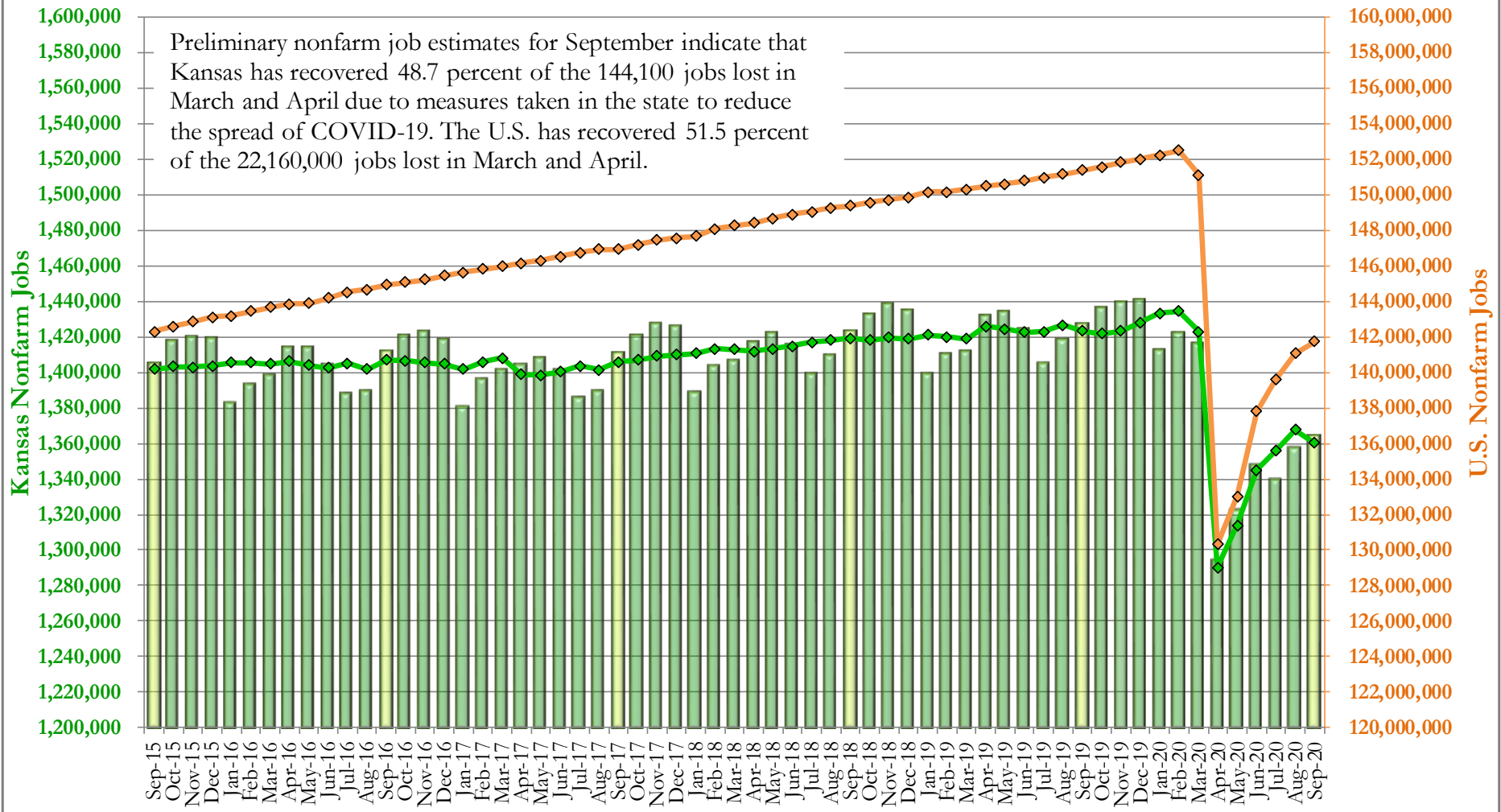
	September 2020	Month Change		12 Month Change	
		Absolute	Percent	Absolute	Percent
TOTAL NONFARM	1,364,600	7,200	0.5%	-62,600	-4.4%
GOVERNMENT	250,500	12,700	5.3%	-13,000	-4.9%
TOTAL PRIVATE	1,114,100	-5,500	-0.5%	-49,600	-4.3%
<i>GOODS-PRODUCING</i>	<i>228,000</i>	<i>-1,300</i>	<i>-0.6%</i>	<i>-10,800</i>	<i>-4.5%</i>
Mining and Logging	6,000	0	0.0%	-800	-11.8%
Construction	64,600	-1,700	-2.6%	100	0.2%
Manufacturing	157,400	400	0.3%	-10,100	-6.0%
<i>PRIVATE SERVICE-PROVIDING</i>	<i>886,100</i>	<i>-4,200</i>	<i>-0.5%</i>	<i>-38,800</i>	<i>-4.2%</i>
Trade, Transportation and Utilities	265,300	-1,400	-0.5%	-400	-0.2%
Information	16,000	-200	-1.2%	-1,900	-10.6%
Financial Activities	74,200	-900	-1.2%	-3,200	-4.1%
Professional and Business Services	173,300	-400	-0.2%	-6,200	-3.5%
Education and Health Services	195,800	1,800	0.9%	-5,800	-2.9%
Leisure and Hospitality	113,600	-2,600	-2.2%	-17,100	-13.1%
Other Services	47,900	-500	-1.0%	-4,200	-8.1%

Industries in green added the most jobs over the year, and industries in red lost the most jobs over the year.

Source: Kansas Department of Labor, Labor Market Information Services and the Bureau of Labor Statistics; Current Employment Statistics (CES)

Nonfarm Jobs Kansas and U.S. September 2015 to September 2020

■ Kansas Jobs
 ◆ Kansas Jobs (Seasonally Adjusted)
 ◆ U.S. Jobs (Seasonally Adjusted)



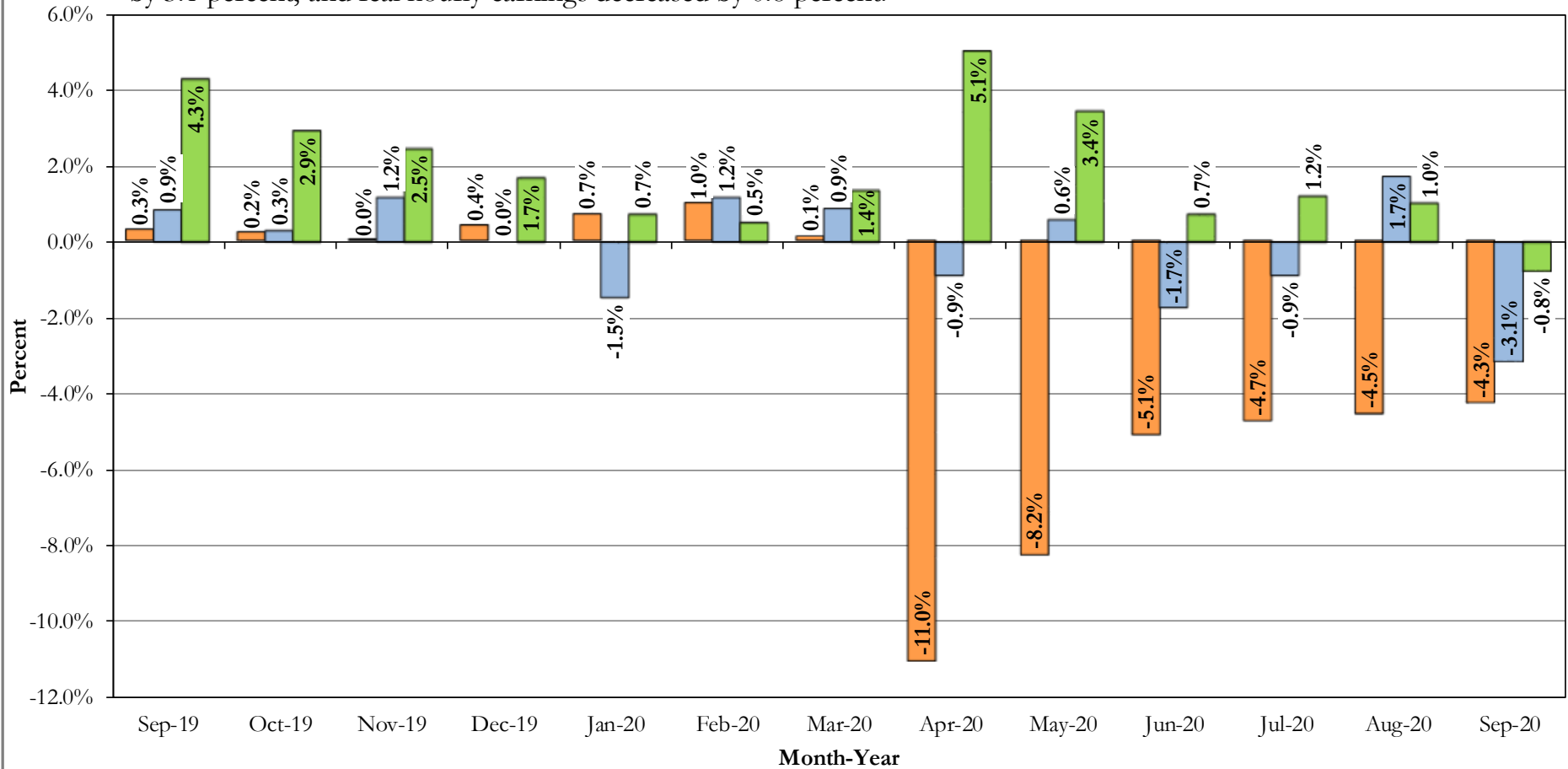
Source: Kansas Department of Labor, Labor Market Information Services and the Bureau of Labor Statistics; Current Employment Statistics (CES)

Over-the-Year Percent Change in Jobs, Not Seasonally Adjusted (KS) -4.4%
 Over-the-Year Percent Change in Jobs, Not Seasonally Adjusted (US) -6.4%

**Over-the-Year Change in Private Sector Jobs, Average Weekly Hours, and Real Hourly Earnings
Not Seasonally Adjusted
Kansas
September 2019 to September 2020**

■ **Jobs**
 ■ **Average Weekly Hours**
 ■ **Real Hourly Earnings**

Private sector job estimates show improvement since April, but remain significantly lower than a year ago. In September, the over-the-year decrease in private sector jobs was 4.3 percent, the number of average weekly hours worked decreased by 3.1 percent, and real hourly earnings decreased by 0.8 percent.



Source: Kansas Department of Labor, Labor Market Information Services and the Bureau of Labor Statistics; Current Employment Statistics (CES)

HOUSEHOLD DATA

Local Area Unemployment Statistics (LAUS)

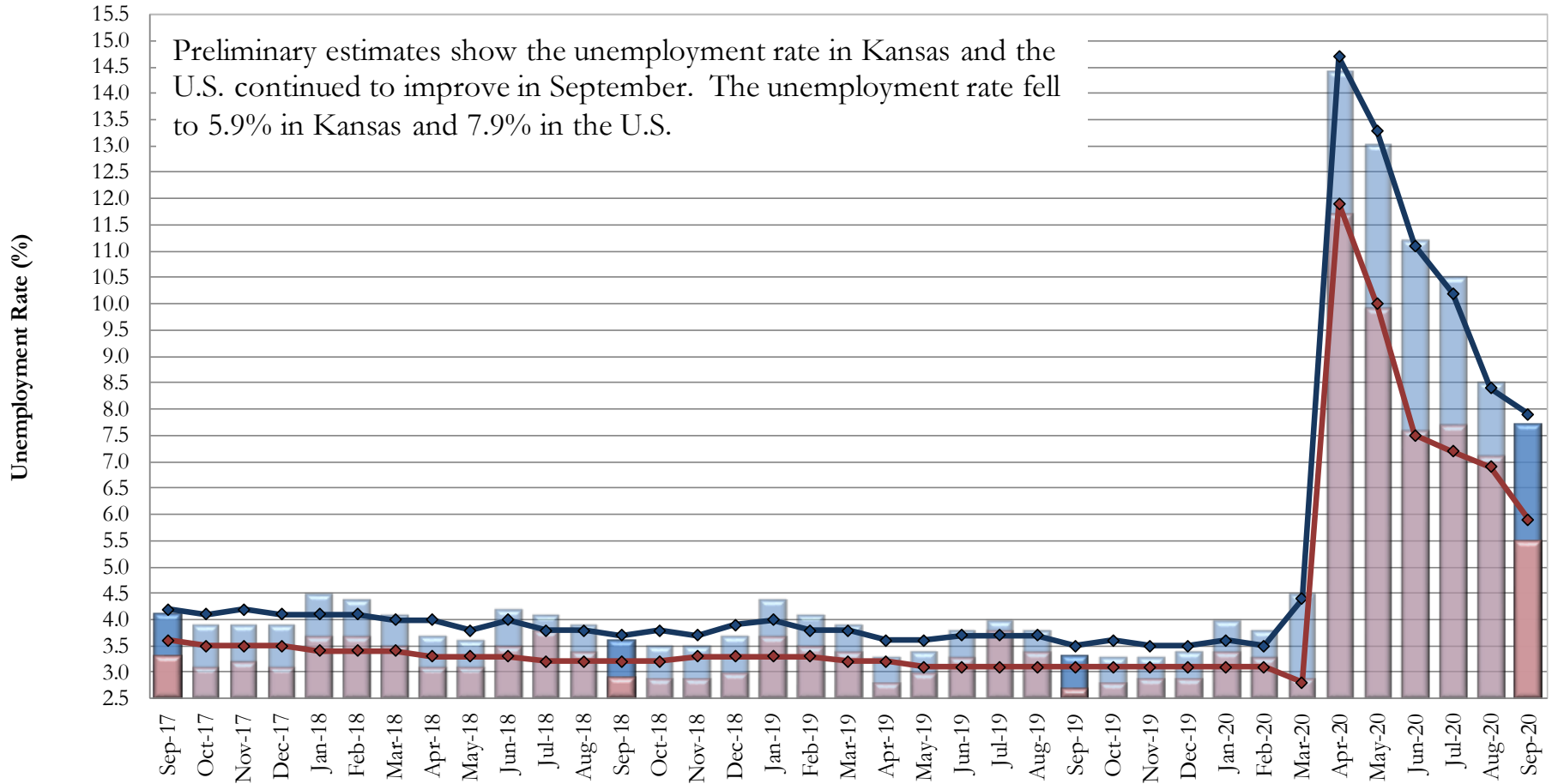
Seasonally adjusted estimates:

- The unemployment rate decreased to 5.9% in September. The revised unemployment rate for August remained unchanged at 6.9%.
- Over the last 12 months the unemployment rate increased from 3.1% in September 2019 to 5.9% in September 2020.

Not seasonally adjusted estimates:

- The labor force decreased by a net of 25,124 individuals to a total of 1,470,103 participants over the month.
- Employment decreased by a net of 539 individuals to 1,388,627 over the month.
- The pool of the unemployed decreased by a net of 24,585 individuals to 81,476 over the month.
- The not seasonally adjusted unemployment rate was 5.5% in September.

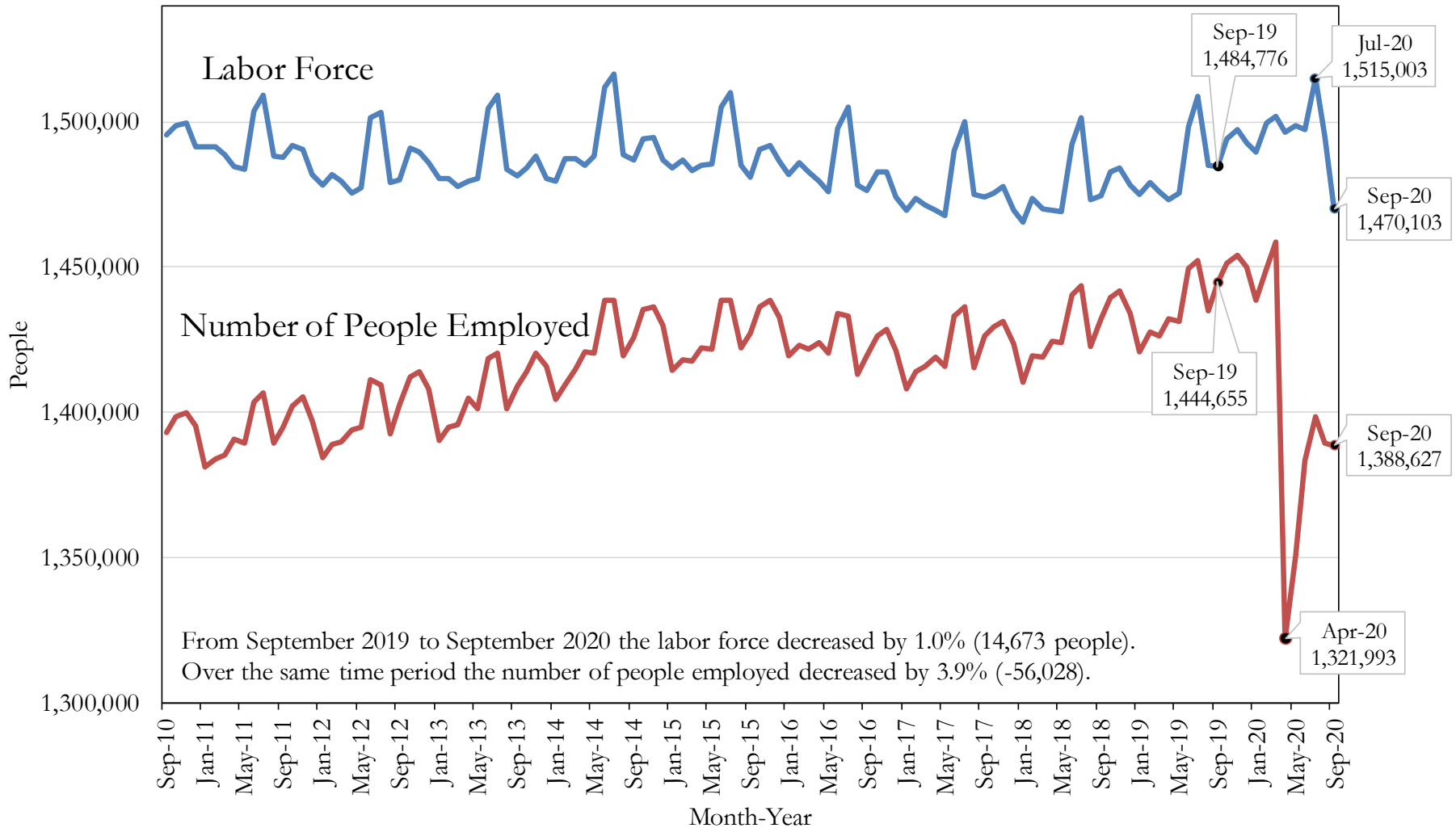
Unemployment Rate Kansas and U.S. September 2017 - September 2020



	Sep-17	Oct-17	Nov-17	Dec-17	Jan-18	Feb-18	Mar-18	Apr-18	May-18	Jun-18	Jul-18	Aug-18	Sep-18	Oct-18	Nov-18	Dec-18	Jan-19	Feb-19	Mar-19	Apr-19	May-19	Jun-19	Jul-19	Aug-19	Sep-19	Oct-19	Nov-19	Dec-19	Jan-20	Feb-20	Mar-20	Apr-20	May-20	Jun-20	Jul-20	Aug-20	Sep-20
U.S.	4.1	3.9	3.9	3.9	4.5	4.4	4.1	3.7	3.6	4.2	4.1	3.9	3.6	3.5	3.5	3.7	4.4	4.1	3.9	3.3	3.4	3.8	4.0	3.8	3.3	3.3	3.3	3.4	4.0	3.8	4.5	14.4	13.0	11.2	10.5	8.5	7.7
Kansas	3.3	3.1	3.2	3.1	3.7	3.7	3.5	3.1	3.1	3.5	3.8	3.4	2.9	2.9	2.9	3.0	3.7	3.5	3.4	2.8	3.0	3.3	3.8	3.4	2.7	2.8	2.9	2.9	3.4	3.3	2.9	11.7	9.9	7.6	7.7	7.1	5.5
U.S. SA	4.2	4.1	4.2	4.1	4.1	4.1	4.0	4.0	3.8	4.0	3.8	3.8	3.7	3.8	3.7	3.9	4.0	3.8	3.8	3.6	3.6	3.7	3.7	3.7	3.5	3.6	3.5	3.5	3.6	3.5	4.4	14.7	13.3	11.1	10.2	8.4	7.9
Kansas SA	3.6	3.5	3.5	3.5	3.4	3.4	3.4	3.3	3.3	3.3	3.2	3.2	3.2	3.2	3.3	3.3	3.3	3.3	3.2	3.2	3.1	3.1	3.1	3.1	3.1	3.1	3.1	3.1	3.1	2.8	11.9	10.0	7.5	7.2	6.9	5.9	

Source: Kansas Department of Labor, Labor Market Information Services and the Bureau of Labor Statistics; Local Area Unemployment Statistics (LAUS)

Labor Force and Employment Not Seasonally Adjusted Kansas September 2010 to September 2020



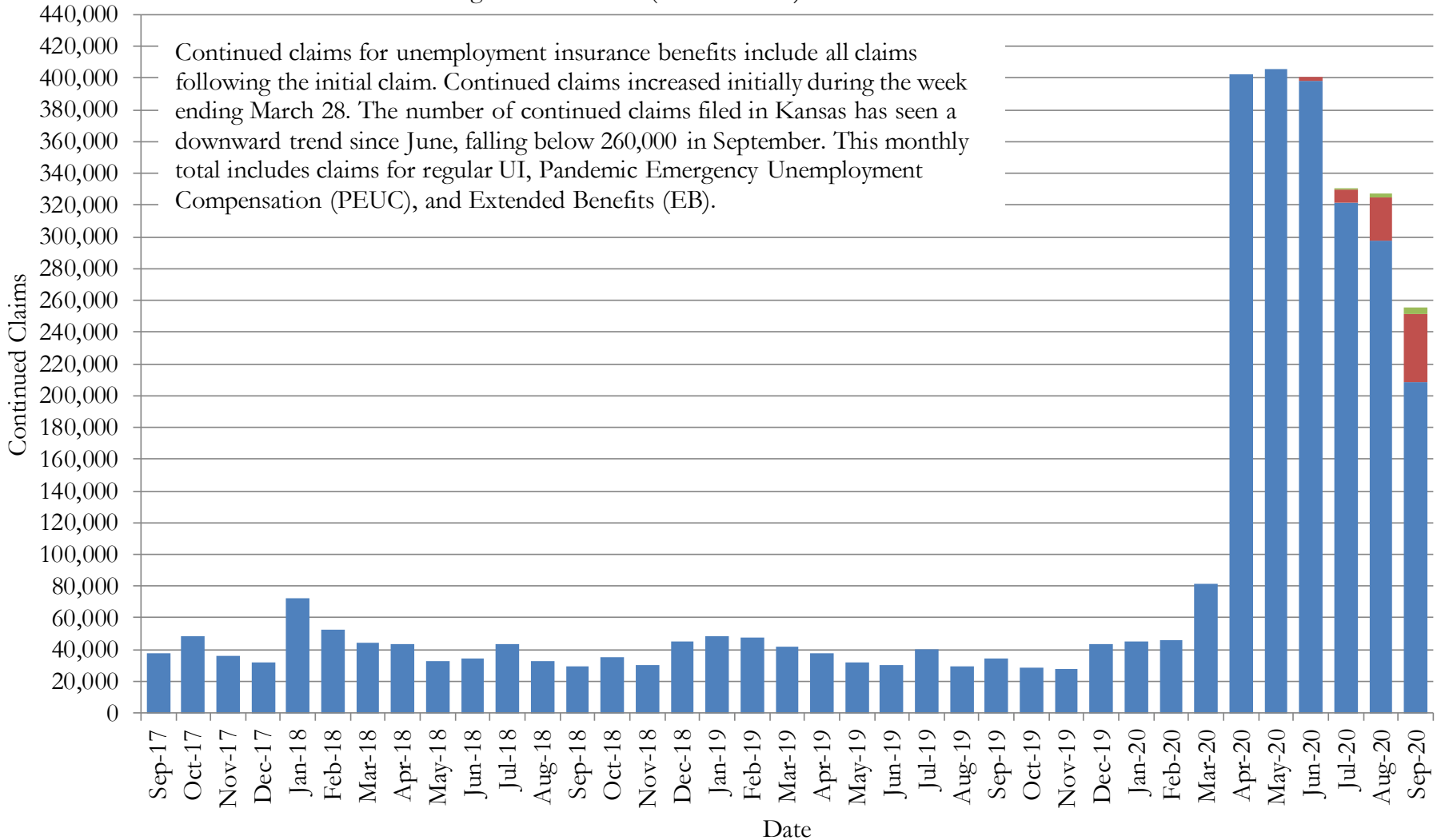
UNEMPLOYMENT INSURANCE CLAIMS

Estimates are not seasonally adjusted

- In September, there were 86,435 initial claims for regular unemployment insurance and 50,078 PUA initial claims.
- In September, there were 217,319 continued claims for regular unemployment, 43,699 PEUC continued claims, 3,757 EB continued claims, and 939,576 PUA continued claims.
- The number of individuals receiving unemployment insurance benefits decreased by 6,598 over the month, and increased by 82,287 from September 2019 (includes regular UI, PUA, PEUC, and EB claims).
- The average duration of benefit receipt is 10.0 weeks, an increase of 0.7 from last month and a decrease of 1.2 over the past 12 months (average duration is measured with a 12 month moving average and includes regular UI, PEUC, and EB claims).

Continued Claims by Program Kansas September 2017 - September 2020

■ Regular
 ■ PEUC (CARES ACT)
 ■ Extended Benefits



Source: Kansas Department of Labor, Labor Market Information Services; Unemployment Insurance Statistics

Number of Individuals Receiving Unemployment Insurance Benefits Kansas January 2008 to September 2020

The number of people receiving unemployment insurance benefits decreased in September to 89,518. This total includes data from all active unemployment programs: regular UI, Pandemic Unemployment Assistance (PUA), Pandemic Emergency Unemployment Compensation (PEUC), and Extended Benefits (EB).

