

Review and Analysis for September 2021

(Embargoed until October 22, 2021)

IMPORTANT NOTE: This release includes nonfarm jobs and labor force estimates for September 2021. Data collected for this report references the week including September 12th.

Summary:

- Kansas added 1,900 total nonfarm jobs in September 2021. This change was due to a gain of 1,100 private sector jobs and a gain of 800 government jobs.
- The unemployment rate increased to 3.9 percent in September.
- For the weeks ending 9/4/21 – 10/2/21, the weekly average for regular unemployment insurance was 1,606 initial claims and 8,284 continued claims.



For more information, contact:

Becky Shaffer

Communications Manager

401 S.W. Topeka Blvd

Topeka, KS 66603

Email: KDOL.Communications@ks.gov

INDUSTRY DATA

Current Employment Statistics (CES)

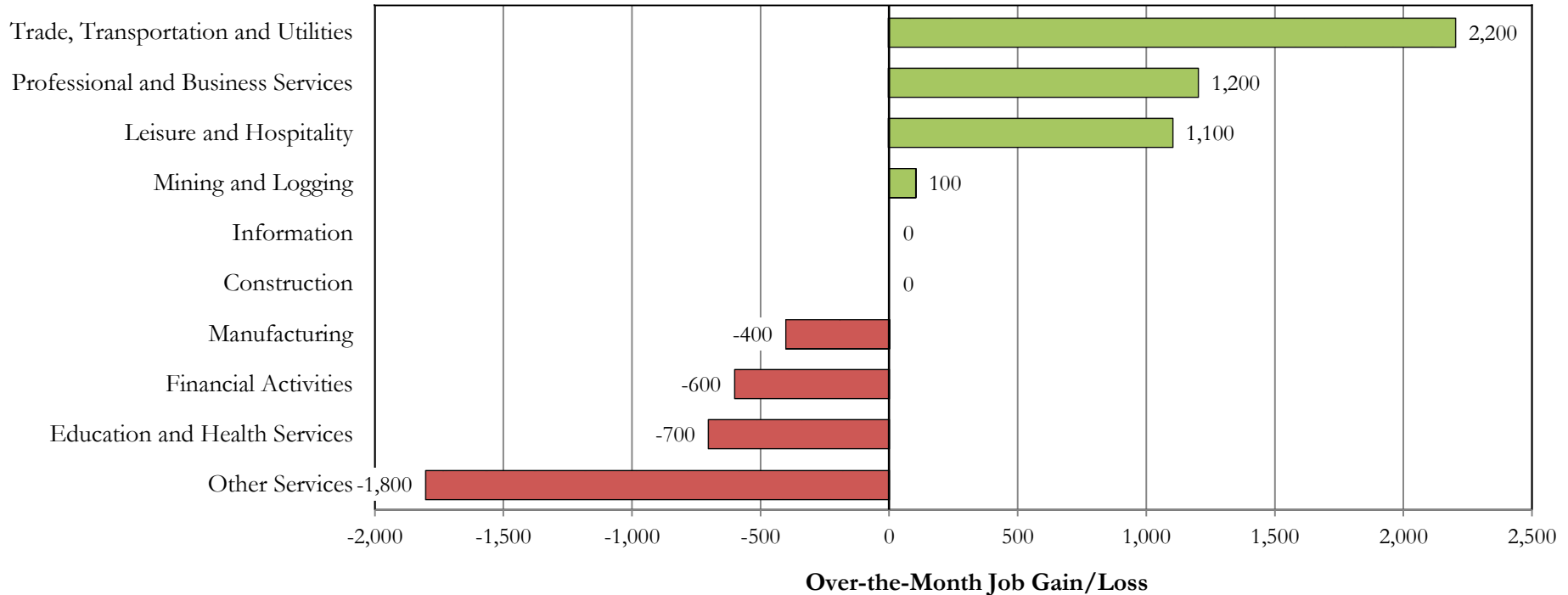
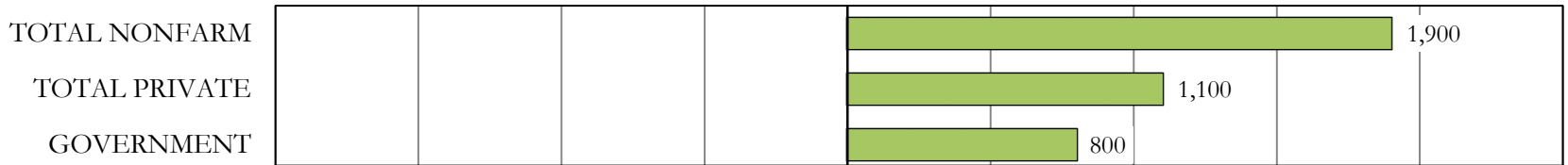
- Seasonally adjusted preliminary total nonfarm jobs estimates for August were revised upward by 4,000 jobs, from 1,381,100 to 1,385,100. Seasonally adjusted private sector jobs were revised upward by 700 jobs, from 1,132,700 to 1,133,400.
- Kansas added 1,900 jobs over the month. Over the past 12 months, the number of nonfarm jobs increased by a total of 32,200 jobs. Estimates are seasonally adjusted.
- The private sector added 1,100 jobs over the month, or +0.1%. The largest gain was in Trade, Transportation and Utilities (+2,200), while the largest loss was in Other Services (-1,800). Over the past 12 months, the private sector gained 28,000 jobs. Estimates are seasonally adjusted.
- Average weekly hours worked in the private sector remained unchanged compared to last September, at 34.0 hours. Average nominal hourly earnings increased over-the-year by \$1.80 to \$27.76 (+6.9%). Average nominal weekly earnings increased by \$61.20 to \$943.84 (+6.9%) over the past 12 months. Estimates are not seasonally adjusted.

Over-the-Month Change in Employment (seasonally adjusted)

Kansas

September 2021

Five of the major sectors saw an increase in jobs, while four lost jobs, and two remained unchanged.



Source: Kansas Department of Labor, Labor Market Information Services and the Bureau of Labor Statistics; Current Employment Statistics (CES)

September 2021 Not Seasonally Adjusted Nonfarm Jobs

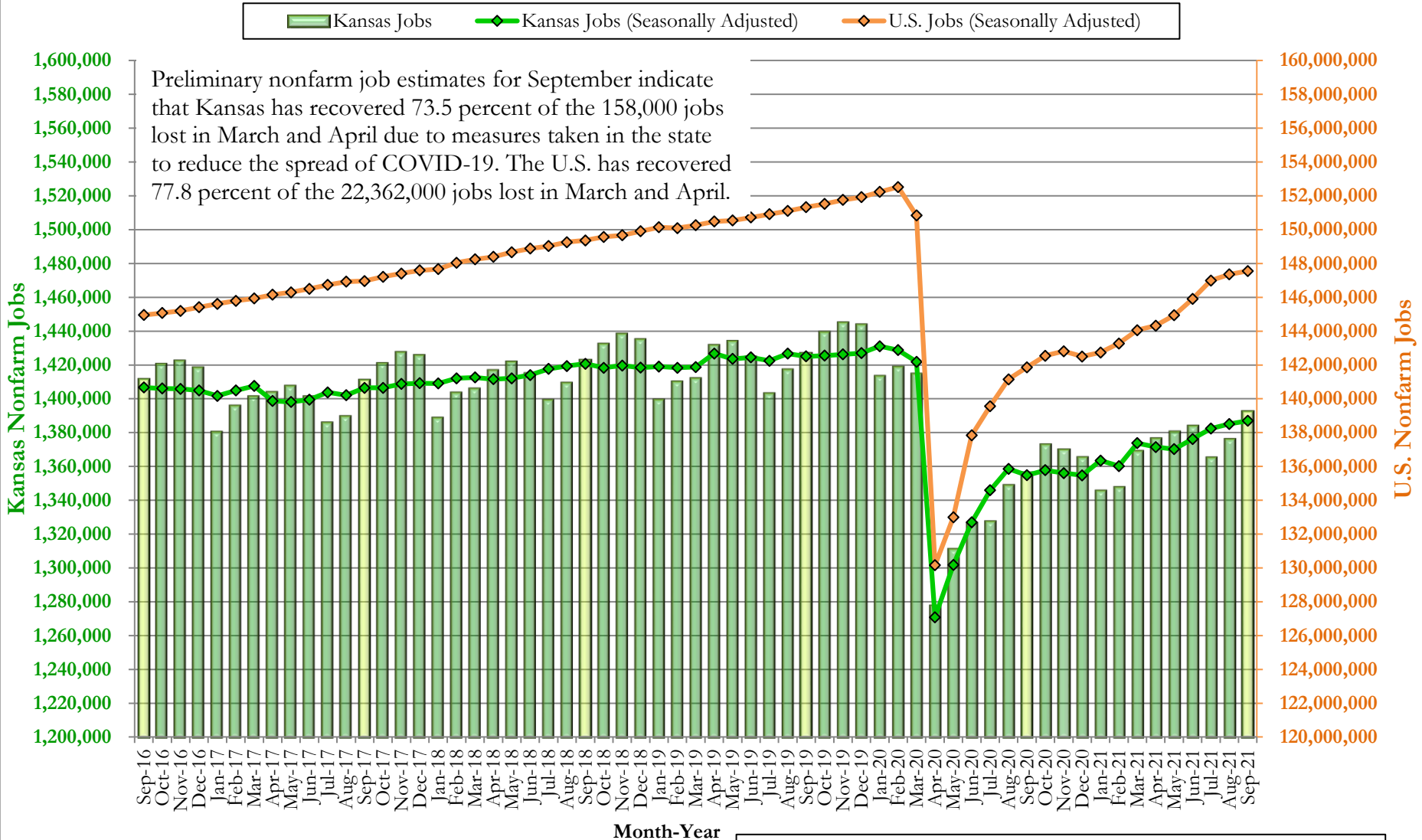
Place of Work Data

	September 2021	Month Change		12 Month Change	
		Absolute	Percent	Absolute	Percent
TOTAL NONFARM	1,392,500	16,400	1.2%	36,600	2.7%
GOVERNMENT	255,300	19,000	8.0%	5,600	2.2%
TOTAL PRIVATE	1,137,200	-2,600	-0.2%	31,000	2.8%
<i>GOODS-PRODUCING</i>	<i>233,300</i>	<i>-1,600</i>	<i>-0.7%</i>	<i>7,100</i>	<i>3.1%</i>
Mining and Logging	6,000	0	0.0%	400	7.1%
Construction	64,200	-1,700	-2.6%	600	0.9%
Manufacturing	163,100	100	0.1%	6,100	3.9%
<i>PRIVATE SERVICE-PROVIDING</i>	<i>903,900</i>	<i>-1,000</i>	<i>-0.1%</i>	<i>23,900</i>	<i>2.7%</i>
Trade, Transportation and Utilities	273,300	2,400	0.9%	12,400	4.8%
Information	16,100	-200	-1.2%	-300	-1.8%
Financial Activities	74,600	-800	-1.1%	-1,900	-2.5%
Professional and Business Services	174,700	600	0.3%	5,900	3.5%
Education and Health Services	195,900	-1,000	-0.5%	-1,200	-0.6%
Leisure and Hospitality	121,400	-1,300	-1.1%	9,800	8.8%
Other Services	47,900	-700	-1.4%	-800	-1.6%

Industries in green added the most jobs over the year, and industries in red lost the most jobs over the year.

Source: Kansas Department of Labor, Labor Market Information Services and the Bureau of Labor Statistics; Current Employment Statistics (CES)

Nonfarm Jobs Kansas and U.S. September 2016 to September 2021



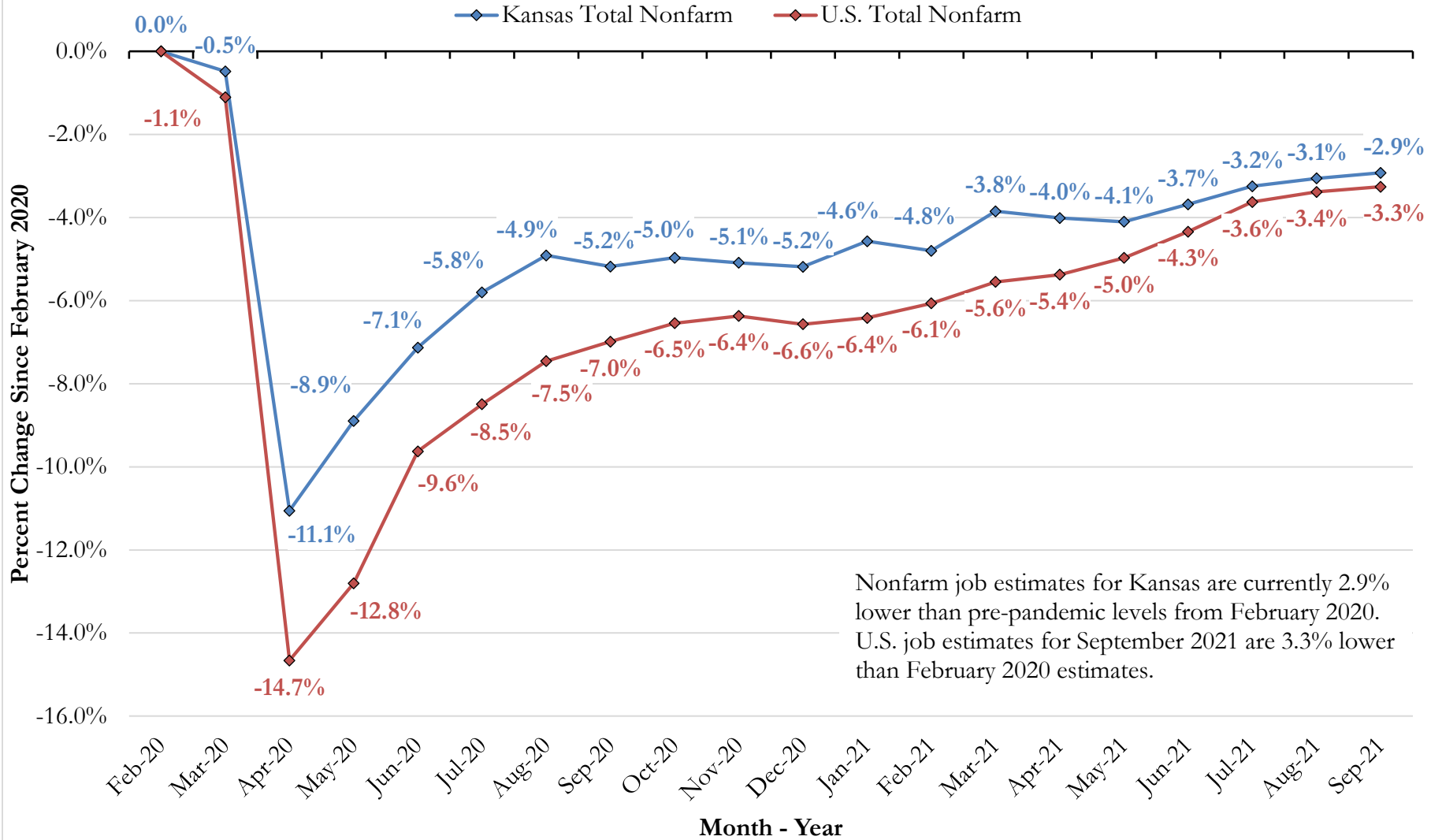
Source: Kansas Department of Labor, Labor Market Information Services and the Bureau of Labor Statistics; Current Employment Statistics (CES)

Over-the-Year Percent Change in Jobs, Not Seasonally Adjusted (KS) +2.7%
 Over-the-Year Percent Change in Jobs, Not Seasonally Adjusted (US) +4.0%

Percent Change in Jobs Since February 2020

Total Nonfarm (seasonally adjusted)

February 2020 to September 2021



Source: Kansas Department of Labor, Labor Market Information Services and the Bureau of Labor Statistics; Current Employment Statistics (CES)

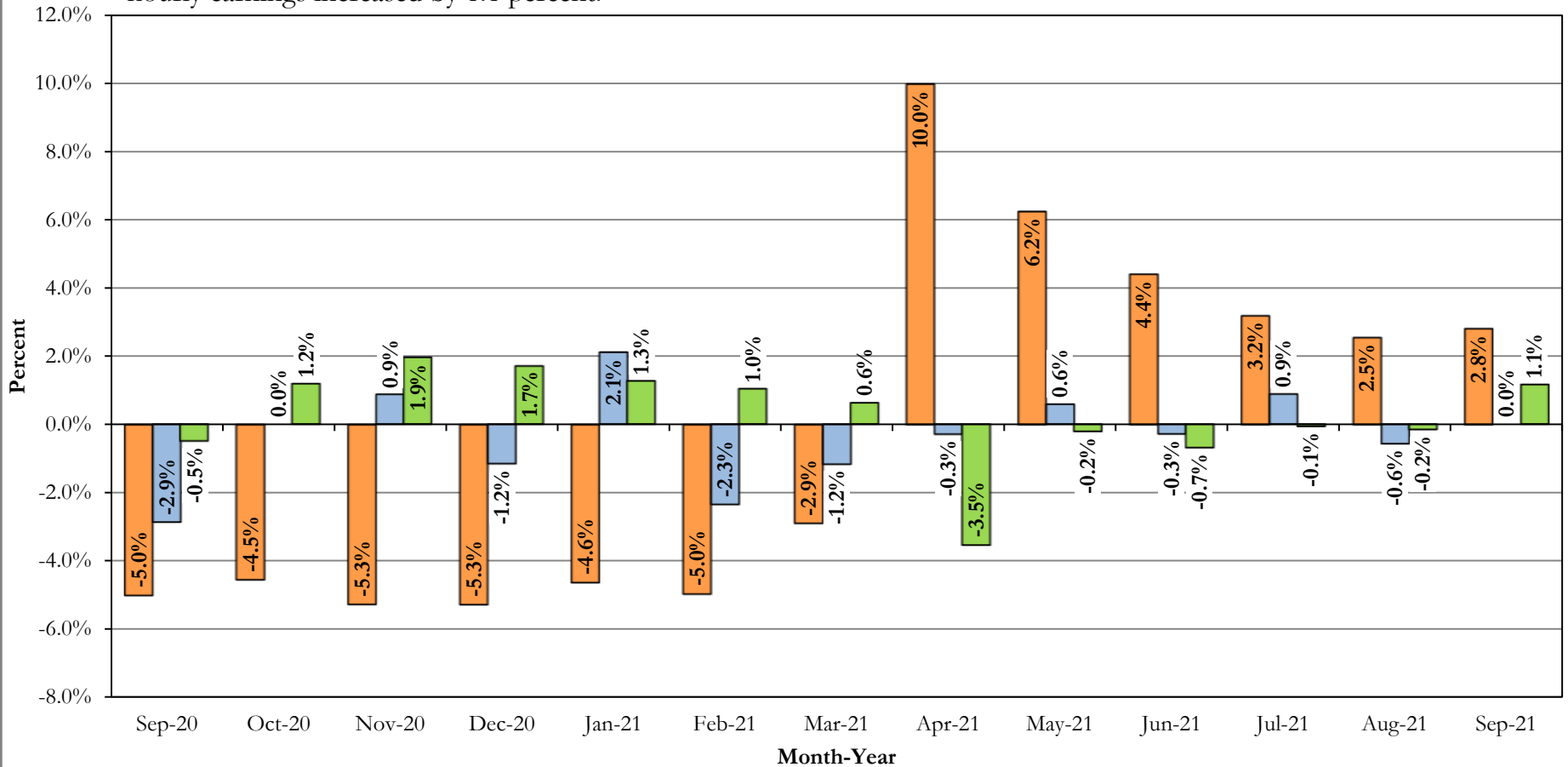
Over-the-Year Change in Private Sector Jobs, Average Weekly Hours, and Real Hourly Earnings Not Seasonally Adjusted

Kansas

September 2020 to September 2021

■ Jobs
 ■ Average Weekly Hours
 ■ Real Hourly Earnings

Private sector job estimates show improvement from one year ago. In September, the over-the-year increase in private sector jobs was 2.8 percent, the number of average weekly hours worked showed no change over-the-year, and real hourly earnings increased by 1.1 percent.



Source: Kansas Department of Labor, Labor Market Information Services and the Bureau of Labor Statistics; Current Employment Statistics (CES)

HOUSEHOLD DATA

Local Area Unemployment Statistics (LAUS)

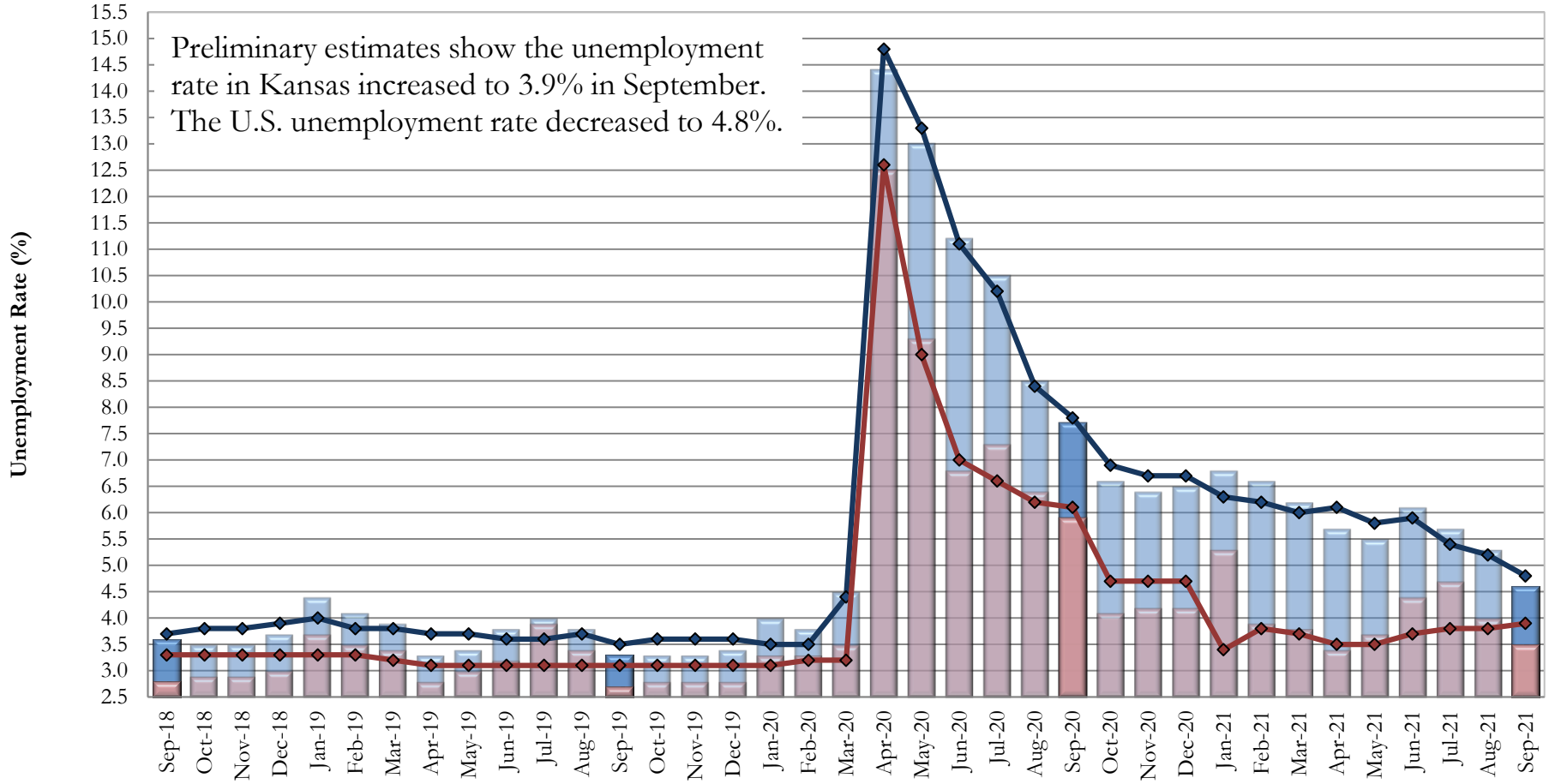
Seasonally adjusted estimates:

- The unemployment rate increased to 3.9% in September. The revised unemployment rate for August remained unchanged at 3.8%. Over the last 12 months the unemployment rate decreased by 2.2 percentage points from September 2020 to September 2021.
- The labor force decreased by a net of 447 individuals to a total of 1,514,766 participants over the month.
- Employment decreased by a net of 1,534 individuals to 1,455,727 over the month.
- The pool of the unemployed increased by a net of 1,087 individuals to 59,039 over the month.

Not seasonally adjusted estimates:

- The not seasonally adjusted unemployment rate was 3.5% in September.

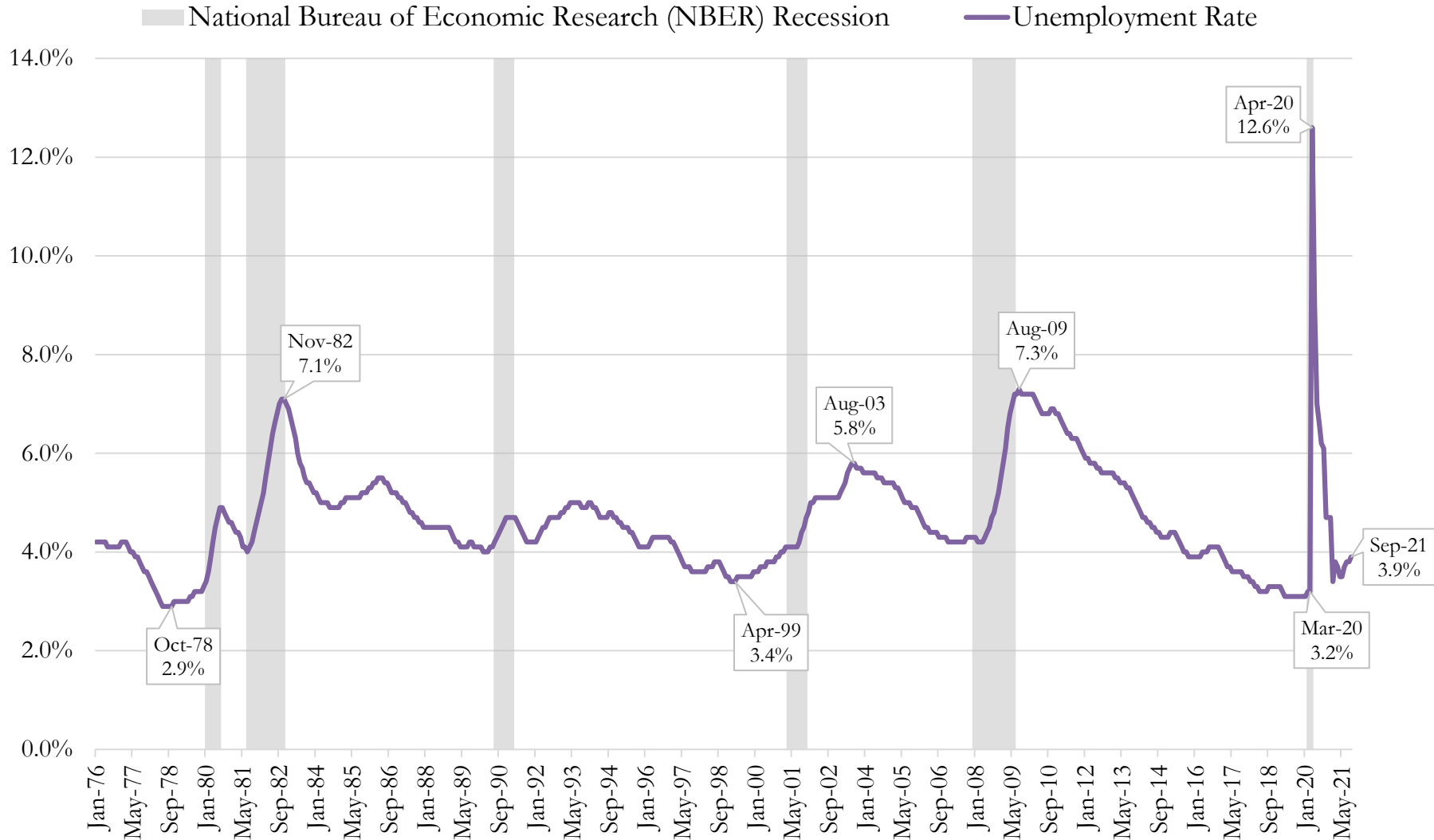
Unemployment Rate Kansas and U.S. September 2018 - September 2021



	Sep-18	Oct-18	Nov-18	Dec-18	Jan-19	Feb-19	Mar-19	Apr-19	May-19	Jun-19	Jul-19	Aug-19	Sep-19	Oct-19	Nov-19	Dec-19	Jan-20	Feb-20	Mar-20	Apr-20	May-20	Jun-20	Jul-20	Aug-20	Sep-20	Oct-20	Nov-20	Dec-20	Jan-21	Feb-21	Mar-21	Apr-21	May-21	Jun-21	Jul-21	Aug-21	Sep-21
U.S.	3.6	3.5	3.5	3.7	4.4	4.1	3.9	3.3	3.4	3.8	4.0	3.8	3.3	3.3	3.3	3.4	4.0	3.8	4.5	14.4	13.0	11.2	10.5	8.5	7.7	6.6	6.4	6.5	6.8	6.6	6.2	5.7	5.5	6.1	5.7	5.3	4.6
Kansas	2.8	2.9	2.9	3.0	3.7	3.5	3.4	2.8	3.0	3.2	3.9	3.4	2.7	2.8	2.8	3.3	3.3	3.5	12.5	9.3	6.8	7.3	6.4	5.9	4.1	4.2	4.2	5.3	3.9	3.8	3.4	3.7	4.4	4.7	4.0	3.5	
U.S. SA	3.7	3.8	3.8	3.9	4.0	3.8	3.8	3.7	3.7	3.6	3.6	3.7	3.5	3.6	3.6	3.6	3.5	3.5	4.4	14.8	13.3	11.1	10.2	8.4	7.8	6.9	6.7	6.7	6.3	6.2	6.0	6.1	5.8	5.9	5.4	5.2	4.8
Kansas SA	3.3	3.3	3.3	3.3	3.3	3.3	3.2	3.1	3.1	3.1	3.1	3.1	3.1	3.1	3.1	3.1	3.1	3.2	3.2	12.6	9.0	7.0	6.6	6.2	6.1	4.7	4.7	4.7	3.4	3.8	3.7	3.5	3.5	3.7	3.8	3.8	3.9

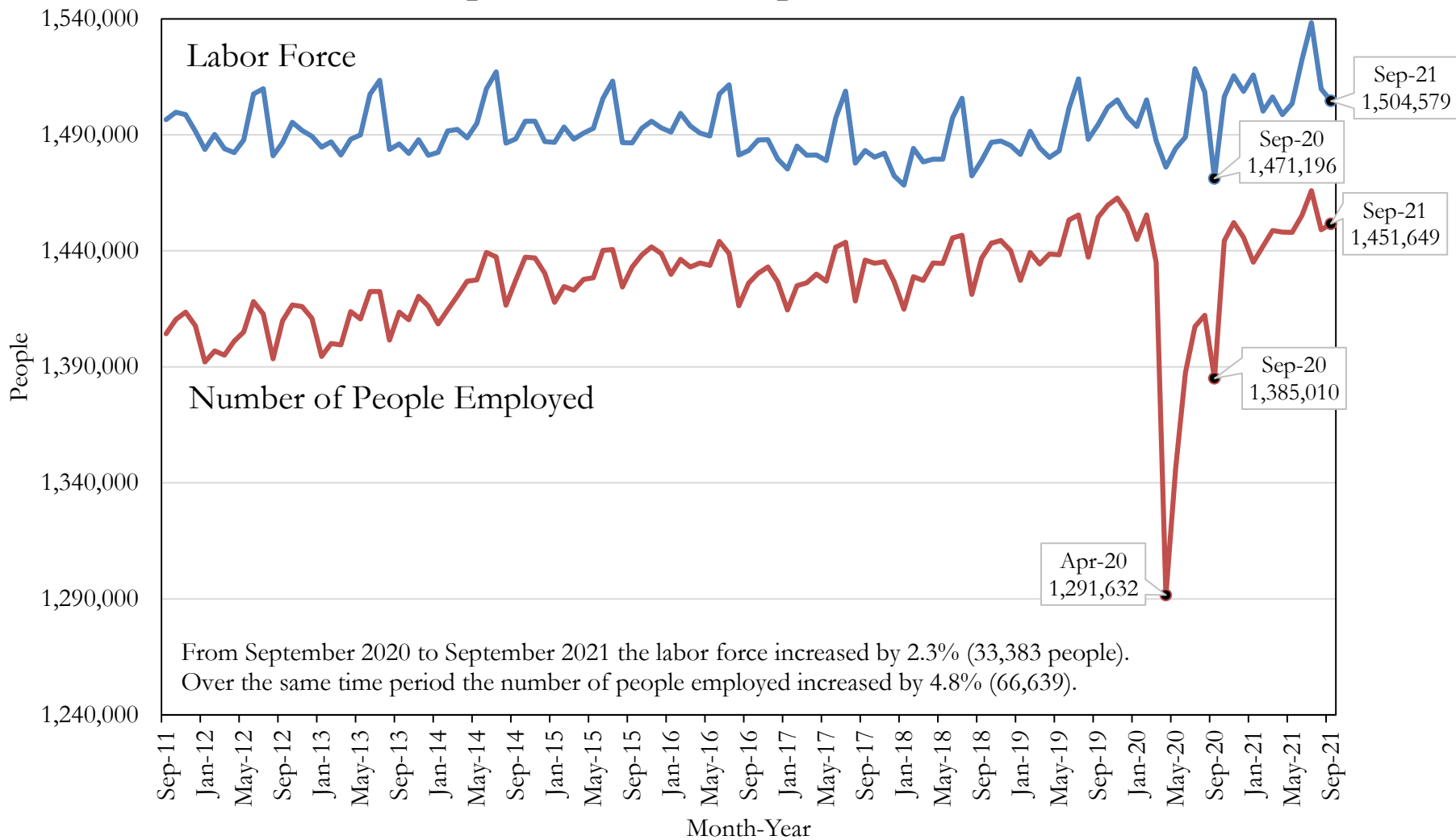
Source: Kansas Department of Labor, Labor Market Information Services and the Bureau of Labor Statistics; Local Area Unemployment Statistics (LAUS)

Unemployment Rate Kansas January 1976 to September 2021



Source: Kansas Department of Labor, Labor Market Information Services and the Bureau of Labor Statistics; Local Area Unemployment Statistics (LAUS)

Labor Force and Employment Not Seasonally Adjusted Kansas September 2011 to September 2021



Source: Kansas Department of Labor, Labor Market Information Services and the Bureau of Labor Statistics; Local Area Unemployment Statistics (LAUS)